

For Research Use Only

CoraLite® Plus 488-conjugated CARD11 Monoclonal antibody

Catalog Number: CL488-68269



Basic Information

Catalog Number:

CL488-68269

Source:

Mouse

Isotype:

IgG1

Immunogen Catalog Number:

AG16468

GenBank Accession Number:

BC111719

GeneID (NCBI):

84433

UNIPROT ID:

Q9BXL7

Full Name:

caspase recruitment domain family,
member 11

Calculated MW:

1154 aa, 133 kDa

Observed MW:

140 kDa

Purification Method:

Protein G purification

CloneNo.:

3F5H6

Recommended Dilutions:

IF/ICC: 1:50-1:500

FC (Intra): 0.80 ug per 10⁶ cells in a
100 µl suspension

Excitation/Emission maxima
wavelengths:

493 nm / 522 nm

Applications

Tested Applications:

IF/ICC, FC (Intra)

Species Specificity:

human

Positive Controls:

IF/ICC : HepG2 cells,

FC (Intra) : HepG2 cells,

Background Information

CARD11 also named as BIMP3 or CARMA1, is a 1154 amino acid protein, which contains one PDZ domain, one guanylate kinase-like domain, and one CARD domain. CARD11 localizes in the cytoplasm and co-localized with DPP4 in membrane raft. CARD11 is detected in adult peripheral blood leukocytes, thymus, spleen and liver. CARD11 also is found in CARD11 promyelocytic leukemia HL-60 cells, chronic myelogenous leukemia K-562 cells, Burkitt's lymphoma Raji cells and colorectal adenocarcinoma SW480 cells. CARD11 is involved in the co-stimulatory signal essential for T-cell receptor mediated T-cell activation.

Storage

Storage:

Store at -20°C. Avoid exposure to light. Stable for one year after shipment.

Storage Buffer:

PBS with 50% glycerol, 0.05% Proclin300, 0.5% BSA, pH7.3

Aliquoting is unnecessary for -20°C storage

For technical support and original validation data for this product please contact:

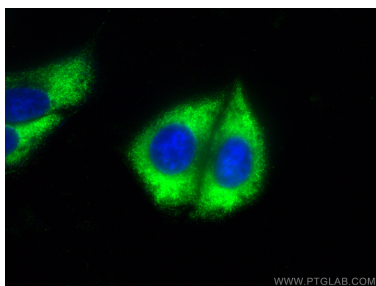
T: 4006900926

E: Proteintech-CN@ptglab.com

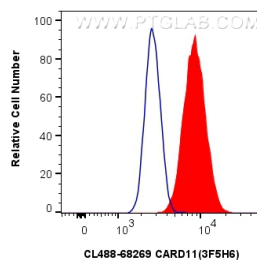
W: ptgcn.com

This product is exclusively available under Proteintech Group brand and is not available to purchase from any other manufacturer.

Selected Validation Data



Immunofluorescent analysis of (-20°C Ethanol) fixed HepG2 cells using CoraLite® Plus 488 CARD11 antibody (CL488-68269, Clone: 3F5H6) at dilution of 1:200.



1x10⁶ HepG2 cells were intracellularly stained with 0.8 ug CoraLite® Plus 488-conjugated CARD11 Monoclonal antibody (CL488-68269, Clone:3F5H6) (red), or 0.8 ug CoraLite® Plus 488 Mouse IgG1 Isotype Control (1F8D3) (CL488-66360-1, Clone: 1F8D3) (blue). Cells were fixed with 4% PFA and permeabilized with Flow Cytometry Perm Buffer.