

CoraLite® Plus 488-conjugated CBX2 Monoclonal antibody

Catalog Number: **CL488-68244**

Basic Information

Catalog Number:

CL488-68244

Size:

1000 µg/ml

Source:

Mouse

Isotype:

IgG1

Immunogen Catalog Number:

AG8311

GenBank Accession Number:

BC004252

GeneID (NCBI):

84733

UNIPROT ID:

Q14781

Full Name:

chromobox homolog 2 (Pc class homolog, Drosophila)

Calculated MW:

56 kDa

Observed MW:

65-70 kDa

Purification Method:

Protein G purification

CloneNo.:

1D3H3

Excitation/Emission maxima wavelengths:

493 nm / 522 nm

Applications

Tested Applications:

FC (Intra)

Species Specificity:

Human

Background Information

The chromobox homolog protein 2 (CBX2) is a critical component of the PRC1 complex involved in antiviral innate immunity, neuronal, and gonadal differentiation, axial patterning during embryonic development, cell proliferation, and senescence (PMID: 32870972). CBX2 has 2 isoforms with the molecular mass of 23 and 56 kDa. Sometimes higher molecular weight around 65-70 kDa can also be observed, which may be a modified variant of CBX2.

Storage

Storage:

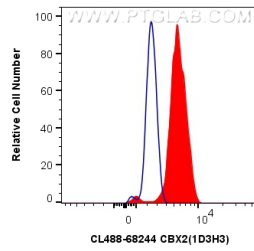
Store at -20°C. Avoid exposure to light. Stable for one year after shipment.

Storage Buffer:

PBS with 50% Glycerol, 0.05% Proclin300, 0.5% BSA, pH 7.3.

Aliquoting is unnecessary for -20°C storage

Selected Validation Data



1X10⁶ HEK-293 cells were intracellularly stained with 0.8 ug CoraLite® Plus 488 Anti-Human CBX2 (CL488-68244, Clone:1D3H3) (red), or 0.8 ug CoraLite® Plus 488 Mouse IgG1 Isotype Control (MOPC-21) (CL488-65124, Clone: MOPC-21) (blue). Cells were fixed and permeabilized with Transcription Factor Staining Buffer Kit (PF00011).