

CoraLite® Plus 488-conjugated IMMT Monoclonal antibody

Catalog Number: **CL488-68226**

Basic Information

Catalog Number:

CL488-68226

Size:

1000 µg/ml

Source:

Mouse

Isotype:

IgG2b

Immunogen Catalog Number:

AG0102

GenBank Accession Number:

BC002412

GeneID (NCBI):

10989

UNIPROT ID:

Q16891

Full Name:

inner membrane protein,
mitochondrial (mitofilin)

Calculated MW:

90 kDa

Observed MW:

90 kDa

Purification Method:

Protein A purification

CloneNo.:

2D2E8

Recommended Dilutions:

IF/ICC 1:50-1:500

**Excitation/Emission maxima
wavelengths:**

493 nm / 522 nm

Applications

Tested Applications:

IF/ICC

Species Specificity:

Human, Rat, Mouse

Positive Controls:

IF/ICC : HeLa cells,

Background Information

IMMT (also known as mitofilin) is an inner mitochondrial membrane protein that is preferentially expressed in heart tissue and is commonly used as the marker for mitochondria. Mitofilin is known to be a critical organizer of mitochondrial cristae morphology and is indispensable for normal mitochondrial function. Three isoforms of mitofilin exist due to the alternative splicing. All three proteins of 87kD, 89kD and 80kD can be detected in immunoblot analysis with this antibody.

Storage

Storage:

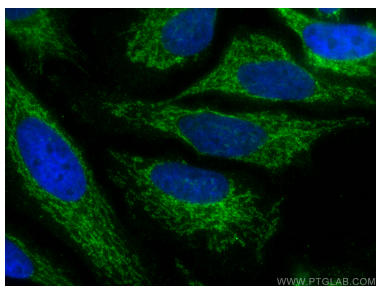
Store at -20°C. Avoid exposure to light. Stable for one year after shipment.

Storage Buffer:

PBS with 50% Glycerol, 0.05% Proclin300, 0.5% BSA, pH 7.3.

Aliquoting is unnecessary for -20°C storage

Selected Validation Data



Immunofluorescent analysis of (4% PFA) fixed HeLa cells using Coralite® Plus 488 IMMT antibody (CL488-68226, Clone: 2D2E8) at dilution of 1:100.