

For Research Use Only



CoraLite® Plus 488-conjugated ATP6V1B1 Monoclonal antibody

Catalog Number: **CL488-68219**

Basic Information

Catalog Number: CL488-68219	GenBank Accession Number: BC063411	Purification Method: Protein G purification
Size: 1000 µg/ml	GeneID (NCBI): 525	CloneNo.: 1G10A8
Source: Mouse	UNIPROT ID: P15313	Recommended Dilutions: IF/ICC 1:50-1:500
Isotype: IgG1	Full Name: ATPase, H ⁺ transporting, lysosomal 56/58kDa, V1 subunit B1	Excitation/Emission maxima wavelengths: 493 nm / 522 nm
Immunogen Catalog Number: AG7405	Calculated MW: 57 kDa	
	Observed MW: 56 kDa	

Applications

Tested Applications: IF/ICC	Positive Controls: IF/ICC : HEK-293 cells,
Species Specificity: human, mouse, rat, pig, rabbit	

Background Information

ATP6V1B1, also named ATP6B1, VATB and VPP3, belongs to the ATPase alpha/beta chains family. ATP6V1B1 is mainly expressed in kidney. ATP6V1B1 is essential for the proper assembly and activity of V-ATPase. In renal intercalated cells, ATP6V1B1 mediates secretion of protons (H⁺) into the urine thereby ensuring correct urinary acidification. The calculated molecular weight of ATP6V1B1 is 57 kDa.

Storage

Storage:
Store at -20°C. Avoid exposure to light. Stable for one year after shipment.
Storage Buffer:
PBS with 50% Glycerol, 0.05% Proclin300, 0.5% BSA, pH 7.3.
Aliquoting is unnecessary for -20°C storage

For technical support and original validation data for this product please contact:

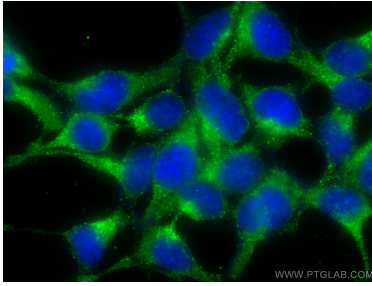
T: 4006900926

E: Proteintech-CN@ptglab.com

W: ptgcn.com

This product is exclusively available under Proteintech Group brand and is not available to purchase from any other manufacturer.

Selected Validation Data



Immunofluorescent analysis of (-20°C Ethanol)
fixed HEK-293 cells using CoraLite® Plus 488
ATP6V1B1 antibody (CL488-68219, Clone: 1G10A8)
at dilution of 1:100.