

For Research Use Only

CoraLite® Plus 488-conjugated CAP1 Monoclonal antibody



Catalog Number:CL488-68207

Basic Information

Catalog Number:

CL488-68207

Size:

1000 µg/ml

Source:

Mouse

Isotype:

IgG1

Immunogen Catalog Number:

AG8876

GenBank Accession Number:

BC013963

GeneID (NCBI):

10487

UNIPROT ID:

Q01518

Full Name:

CAP, adenylate cyclase-associated protein 1 (yeast)

Calculated MW:

475 aa, 52 kDa

Observed MW:

52 kDa

Purification Method:

Protein G purification

CloneNo.:

2H3A10

Recommended Dilutions:

IF 1:50-1:500

Excitation/Emission maxima wavelenghts:

493 nm / 522 nm

Applications

Tested Applications:

FC (Intra), IF/ICC

Species Specificity:

Human, mouse, rat, pig, rabbit

Positive Controls:

IF : HepG2 cells,

Background Information

CAP1, also known as CAP, CAP1-PEN, belongs to the CAP family and contains 1 C-CAP/cofactor C-like domain. CAP1 binds to monomeric actin and regulates the actin cytoskeleton to control cell size, adhesion, and migration (PMID: 23737525). CAP1 also functions as a receptor for inflammatory cytokine resistin (PMID: 24606903). CAP1 is an abundant and ubiquitously expressed protein. Western blot analysis detected CAP1 at an apparent molecular mass of 52 kDa.

Storage

Storage:

Store at -20°C. Avoid exposure to light. Stable for one year after shipment.

Storage Buffer:

PBS with 50% Glycerol, 0.05% Proclin300, 0.5% BSA, pH 7.3.

Aliquoting is unnecessary for -20°C storage

For technical support and original validation data for this product please contact:

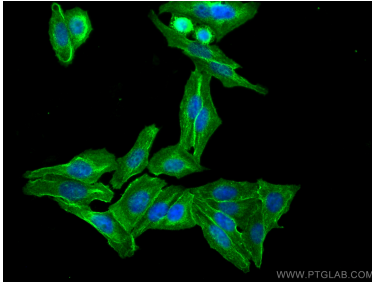
T: 4006900926

E: Proteintech-CN@ptglab.com

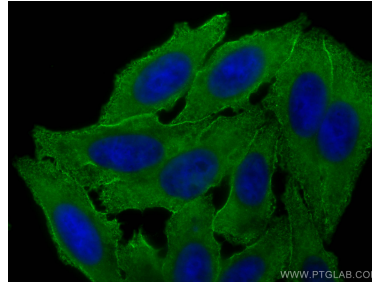
W: ptgcn.com

This product is exclusively available under Proteintech Group brand and is not available to purchase from any other manufacturer.

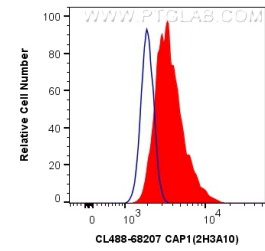
Selected Validation Data



Immunofluorescent analysis of (4% PFA) fixed HepG2 cells using CoraLite® Plus 488 CAP1 antibody (CL488-68207, Clone: 2H3A10) at dilution of 1:200.



Immunofluorescent analysis of (-20°C Ethanol) fixed HepG2 cells using CoraLite® Plus 488 CAP1 antibody (CL488-68207, Clone: 2H3A10) at dilution of 1:200.



1X10⁶ HeLa cells were intracellularly stained with 0.4 ug CoraLite® Plus 488 Anti-Human CAP1 (CL488-68207, Clone:2H3A10) (red), or 0.4 ug Control Antibody. Cells were fixed with 4% PFA and permeabilized with Flow Cytometry Perm Buffer (PF00011-C).