

For Research Use Only

# CoraLite® Plus 488-conjugated PSMA4 Monoclonal antibody



Catalog Number: CL488-68203

## Basic Information

Catalog Number:

CL488-68203

Size:

1000 µg/ml

Source:

Mouse

Isotype:

IgG2b

Immunogen Catalog Number:

AG32626

GenBank Accession Number:

BC056249

GeneID (NCBI):

5685

UNIPROT ID:

P25789

Full Name:

proteasome (prosome, macropain)  
subunit, alpha type, 4

Calculated MW:

237 aa, 27 kDa

Observed MW:

29 kDa

Purification Method:

Protein A purification

CloneNo.:

2E6E4

Recommended Dilutions:

IF 1:50-1:500

Excitation/Emission maxima  
wavelengths:

493 nm / 522 nm

## Applications

Tested Applications:

IF/ICC

Species Specificity:

Human, Pig, Rabbit, Rat, Mouse

Positive Controls:

IF : HeLa cells,

## Background Information

### Storage

Storage:

Store at -20°C. Avoid exposure to light. Stable for one year after shipment.

Storage Buffer:

PBS with 50% Glycerol, 0.05% Proclin300, 0.5% BSA, pH 7.3.

Aliquoting is unnecessary for -20°C storage

For technical support and original validation data for this product please contact:

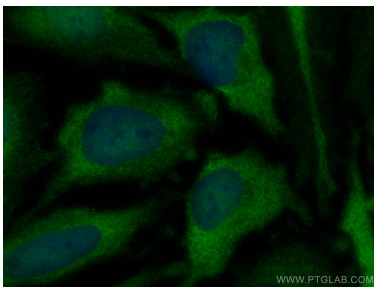
T: 4006900926

E: [Proteintech-CN@ptglab.com](mailto:Proteintech-CN@ptglab.com)

W: [ptgcn.com](http://ptgcn.com)

This product is exclusively available under Proteintech Group brand and is not available to purchase from any other manufacturer.

## Selected Validation Data



Immunofluorescent analysis of (-20°C Methanol) fixed HeLa cells using CoraLite® Plus 488 PSMA4 antibody (CL488-68203, Clone: 2E6E4) at dilution of 1:100.