

# CoraLite® Plus 488-conjugated APPL1 Monoclonal antibody

Catalog Number: **CL488-68195**

## Basic Information

**Catalog Number:**

CL488-68195

**Size:**

1000 µg/ml

**Source:**

Mouse

**Isotype:**

IgG2b

**Immunogen Catalog Number:**

AG3334

**GenBank Accession Number:**

BC028599

**GeneID (NCBI):**

26060

**UNIPROT ID:**

Q9UKG1

**Full Name:**adaptor protein, phosphotyrosine  
interaction, PH domain and leucine  
zipper containing 1**Calculated MW:**

709 aa, 80 kDa

**Observed MW:**

80 kDa

**Purification Method:**

Protein A purification

**CloneNo.:**

1B7B11

**Recommended Dilutions:**

IF/ICC 1:50-1:500

**Excitation/Emission maxima  
wavelengths:**

493 nm / 522 nm

## Applications

**Tested Applications:**

IF/ICC

**Species Specificity:**

Human, mouse, rat, rabbit, pig

**Positive Controls:**

IF/ICC : HepG2 cells,

## Background Information

Adaptor protein, phosphotyrosine interaction, PH domain and leucine zipper containing 1 (APPL1), a binding partner of Akt2 and an important regulator of INS signaling, plays a key role in the regulation of INS secretion [PMID:22615370]. APPL1 interacts with adiponectin receptors and mediates the INS-sensitizing effects of adiponectin in muscle and endothelial cells. It also participates in nuclear signaling and transcriptional regulation, mostly by modulating the activity of various nuclear factors [PMID:22685329]. Apart from its role in endocytosis and endosomal transport, APPL1 was reported to undergo nucleocytoplasmic shuttling and participate in transcriptional regulation, e.g. by interactions with histone deacetylases (HDACs) [PMID:19686092].

## Storage

**Storage:**

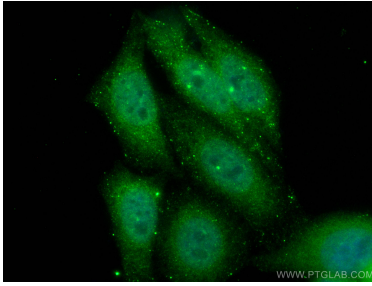
Store at -20°C. Avoid exposure to light. Stable for one year after shipment.

**Storage Buffer:**

PBS with 50% Glycerol, 0.05% Proclin300, 0.5% BSA, pH 7.3.

Aliquoting is unnecessary for -20°C storage

## Selected Validation Data



Immunofluorescent analysis of (4% PFA) fixed HepG2 cells using CoraLite® Plus 488 APPL1 antibody (CL488-68195, Clone: 1B7B11) at dilution of 1:50.