

CoraLite® Plus 488-conjugated PPA1 Monoclonal antibody

Catalog Number: **CL488-68178**

Basic Information

Catalog Number:

CL488-68178

Size:

1000 ug/ml

Source:

Mouse

Isotype:

IgG1

Immunogen Catalog Number:

AG7049

GenBank Accession Number:

BC001022

GeneID (NCBI):

5464

UNIPROT ID:

Q15181

Full Name:

pyrophosphatase (inorganic) 1

Calculated MW:

33 kDa

Observed MW:

33 kDa

Purification Method:

Protein G purification

CloneNo.:

1D11F4

Recommended Dilutions:

IF/ICC 1:50-1:500

Excitation/Emission maxima
wavelengths:

493 nm / 522 nm

Applications

Tested Applications:

IF/ICC

Species Specificity:

human, rat

Positive Controls:

IF/ICC : HeLa cells,

Background Information

PPA1(Inorganic pyrophosphatase) is also named as IOPPP, PP and PPase. It maintains the thermodynamic favorability of these reactions by catalyzing the hydrolysis of pyrophosphates into organic phosphates, which are then exported across the cell membrane(PMID:16300924).The erythrocyte inorganic pyrophosphatase molecule would appear to be a dimer(PMID:4130389).

Storage

Storage:

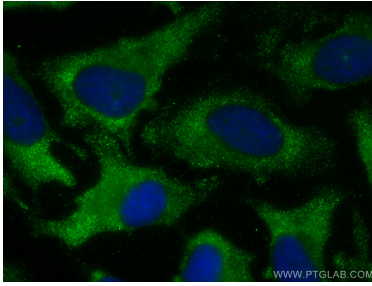
Store at -20°C. Avoid exposure to light. Stable for one year after shipment.

Storage Buffer:

PBS with 50% Glycerol, 0.05% Proclin300, 0.5% BSA, pH 7.3.

Aliquoting is unnecessary for -20°C storage

Selected Validation Data



Immunofluorescent analysis of (-20°C Methanol) fixed HeLa cells using CoraLite® Plus 488 PPA1 antibody (CL488-68178, Clone: 1D11F4) at dilution of 1:100.