

CoraLite® Plus 488-conjugated SEPT6 Monoclonal antibody

Catalog Number: **CL488-68173**

Basic Information

Catalog Number:

CL488-68173

Size:

1000 µg/ml

Source:

Mouse

Isotype:

IgG1

Immunogen Catalog Number:

AG32736

GenBank Accession Number:

BC036240

GeneID (NCBI):

23157

UNIPROT ID:

Q14141

Full Name:

septin 6

Calculated MW:

434 aa, 50 kDa

Observed MW:

50 kDa

Purification Method:

Protein G purification

CloneNo.:

1B1G1

Recommended Dilutions:

IF/ICC 1:50-1:500

**Excitation/Emission maxima
wavelengths:**

493 nm / 522 nm

Applications

Tested Applications:

IF/ICC

Species Specificity:

Human, mouse, pig, rabbit, rat

Positive Controls:

IF/ICC : HEK-293 cells,

Background Information

Septin 6 belongs to the septins family which are conserved GTP-binding proteins functioning as dynamic, regulatable scaffolds for the recruitment of other proteins. They are involved in membrane dynamics, vesicle trafficking, apoptosis, and cytoskeletal remodeling. Septin 6 also interacts with hepatitis C virus (HCV) NS5b RNA polymerase and NS5b-binding protein (HNRNPA1) and may play a role in HCV RNA replication.

Storage

Storage:

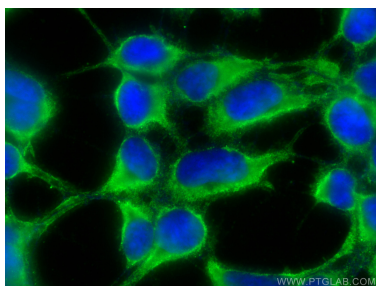
Store at -20°C. Avoid exposure to light. Stable for one year after shipment.

Storage Buffer:

PBS with 50% Glycerol, 0.05% Proclin300, 0.5% BSA, pH 7.3.

Aliquoting is unnecessary for -20°C storage

Selected Validation Data



Immunofluorescent analysis of (-20°C Ethanol) fixed HEK-293 cells using CoraLite® Plus 488 SEPT6 antibody (CL488-68173, Clone: 1B1G1) at dilution of 1:100.