

CoraLite® Plus 488-conjugated TOLLIP Monoclonal antibody

Catalog Number: **CL488-68170**

Basic Information

Catalog Number:

CL488-68170

Size:

1000 µg/ml

Source:

Mouse

Isotype:

IgG1

Immunogen Catalog Number:

AG32731

GenBank Accession Number:

BC012057

GeneID (NCBI):

54472

UNIPROT ID:

Q9H0E2

Full Name:

toll interacting protein

Calculated MW:

30 kDa

Observed MW:

30 kDa

Purification Method:

Protein G purification

CloneNo.:

1B3C4

**Excitation/Emission maxima
wavelengths:**

493 nm / 522 nm

Applications

Tested Applications:

FC (Intra)

Species Specificity:

human, mouse, rat

Background Information

TOLLIP (Toll interacting protein), is an inhibitory adaptor protein. Tollip is a negative regulator of IL-1R and Toll-like receptors signalling pathway, involved in inflammatory immune response and inhibiting IRAK1 phosphorylation and kinase activity (PMID:11441107, PMID:10854325, PMID:11751856). The TOLLIP-dependent selective autophagy pathway plays a role in clearance of cytotoxic polyQ proteins aggregates (PubMed:25042851).

Storage

Storage:

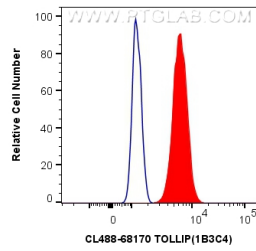
Store at -20°C. Avoid exposure to light. Stable for one year after shipment.

Storage Buffer:

PBS with 50% Glycerol, 0.05% Proclin300, 0.5% BSA, pH 7.3.

Aliquoting is unnecessary for -20°C storage

Selected Validation Data



1X10⁶ Jurkat cells were intracellularly stained with 0.8 ug CoraLite® Plus 488 Anti-Human TOLLIP (CL488-68170, Clone:1B3C4) (red), or 0.8 ug CoraLite® Plus 488 Mouse IgG1 Isotype Control (MOPC-21) (CL488-65124, Clone: MOPC-21) (blue). Cells were fixed with 4% PFA and permeabilized with Flow Cytometry Perm Buffer (PF00011-C).