

# CoraLite® Plus 488-conjugated NIT2 Monoclonal antibody

Catalog Number: **CL488-68169**

## Basic Information

**Catalog Number:**

CL488-68169

**Size:**

1000 µg/ml

**Source:**

Mouse

**Isotype:**

IgG2b

**Immunogen Catalog Number:**

AG9889

**GenBank Accession Number:**

BC020620

**GeneID (NCBI):**

56954

**UNIPROT ID:**

Q9NQR4

**Full Name:**

nitrilase family, member 2

**Calculated MW:**

276 aa, 31 kDa

**Observed MW:**

31 kDa

**Purification Method:**

Protein A purification

**CloneNo.:**

1E5B1

**Recommended Dilutions:**

IF/ICC 1:50-1:500

**Excitation/Emission maxima  
wavelengths:**

493 nm / 522 nm

## Applications

**Tested Applications:**

IF/ICC

**Species Specificity:**

Human, mouse, rat, pig

**Positive Controls:**

IF/ICC : U-251 cells,

## Background Information

NIT2 belongs to a branch of the nitrilase superfamily of enzymes that cleave carbon-nitrogen bonds. NIT2 functions as an omega-amidase and catalyzes hydrolysis of alpha-ketoglutaramate, forming alpha-ketoglutarate and ammonia. This reaction is also functionally coupled with a subset of transaminases that reaminate the keto acid analogs of some essential amino acids, most particularly methionine and phenylalanine.

## Storage

**Storage:**

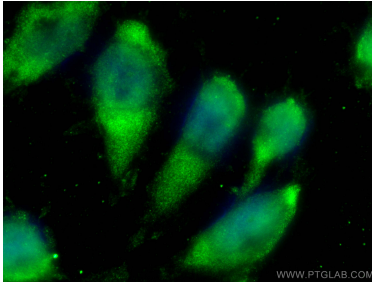
Store at -20°C. Avoid exposure to light. Stable for one year after shipment.

**Storage Buffer:**

PBS with 50% Glycerol, 0.05% Proclin300, 0.5% BSA, pH 7.3.

Aliquoting is unnecessary for -20°C storage

## Selected Validation Data



Immunofluorescent analysis of (-20°C Ethanol) fixed U-251 cells using CoraLite® Plus 488 NIT2 antibody (CL488-68169, Clone: 1E5B1 ) at dilution of 1:200.