

For Research Use Only

# CoraLite® Plus 488-conjugated LANCL1 Monoclonal antibody



Catalog Number: **CL488-68160**

## Basic Information

<b>Catalog Number:</b> CL488-68160	<b>GenBank Accession Number:</b> BC028685	<b>Purification Method:</b> Protein G purification
<b>Size:</b> 1000 µg/ml	<b>GeneID (NCBI):</b> 10314	<b>CloneNo.:</b> 2H6E8
<b>Source:</b> Mouse	<b>UNIPROT ID:</b> O43813	<b>Recommended Dilutions:</b> IF/ICC 1:50-1:500
<b>Isotype:</b> IgG1	<b>Full Name:</b> LanC lantibiotic synthetase component C-like 1 (bacterial)	<b>Excitation/Emission maxima wavelengths:</b> 493 nm / 522 nm
<b>Immunogen Catalog Number:</b> AG32665	<b>Calculated MW:</b> 399 aa, 45 kDa	
	<b>Observed MW:</b> 40 kDa	

## Applications

<b>Tested Applications:</b> IF/ICC	<b>Positive Controls:</b> IF/ICC : U-251 cells,
<b>Species Specificity:</b> Human, mouse, rat, pig	

## Background Information

LanCL1 (also known as P40 or GRP69A), is homologous to bacterial lanthionine synthetase C (LanC) family, which is involved in the biosynthesis of antimicrobial peptides (lantibiotics). LanCL1 was identified as a reduced glutathione (GSH)-binding protein and primarily expressed in neural tissues and testis.

## Storage

**Storage:**  
Store at -20°C. Avoid exposure to light. Stable for one year after shipment.  
**Storage Buffer:**  
PBS with 50% Glycerol, 0.05% Proclin300, 0.5% BSA, pH 7.3.  
**Aliquoting is unnecessary for -20°C storage**

For technical support and original validation data for this product please contact:

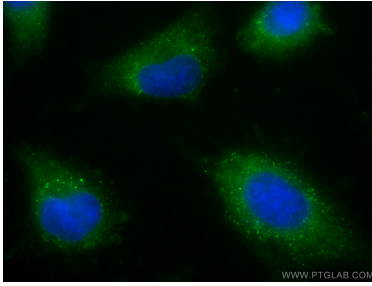
T: 4006900926

E: [Proteintech-CN@ptglab.com](mailto:Proteintech-CN@ptglab.com)

W: [ptgcn.com](http://ptgcn.com)

**This product is exclusively available under Proteintech Group brand and is not available to purchase from any other manufacturer.**

## Selected Validation Data



Immunofluorescent analysis of (-20°C Ethanol) fixed U-251 cells using CoraLite® Plus 488 LANCL1 antibody (CL488-68160, Clone: 2H6E8 ) at dilution of 1:200.