

CoraLite® Plus 488-conjugated WNK1 Monoclonal antibody

Catalog Number: **CL488-68149**

Basic Information

Catalog Number: CL488-68149	GenBank Accession Number: BC021121	Purification Method: Protein A purification
Size: 1000 µg/ml	GeneID (NCBI): 65125	CloneNo.: 1B6A10
Source: Mouse	UNIPROT ID: Q9H4A3	Recommended Dilutions: IF/ICC 1:50-1:500
Isotype: IgG2a	Full Name: WNK lysine deficient protein kinase 1	Excitation/Emission maxima wavelengths: 493 nm / 522 nm
Immunogen Catalog Number: AG28044	Calculated MW: 251 kDa	
	Observed MW: 250 kDa	

Applications

Tested Applications: IF/ICC, FC (Intra)	Positive Controls: IF/ICC : A549 cells,
Species Specificity: Human, Mouse, Rat	

Background Information

WNK kinase is a unique serine-threonine kinase in which the lysine (K) residue in the catalytic domain, that is found in the majority of kinases is not conserved. In mammals, there are four WNK kinase family members (WNK1-4). WNK1 has 6 isoforms, such as long form WNK1 (L-WNK1, 250 kDa, strong expression in dorsal root ganglia and spinal cord); kidney-specific isoform (KS-WNK1, 207 kDa, lacks a kinase domain). KS-WNK1 cannot phosphorylate substrates and instead interacts with and modulates the actions of other WNKs via a carboxyl terminal HQ domain.

Storage

Storage:
Store at -20°C. Avoid exposure to light. Stable for one year after shipment.
Storage Buffer:
PBS with 50% Glycerol, 0.05% Proclin300, 0.5% BSA, pH 7.3.
Aliquoting is unnecessary for -20°C storage

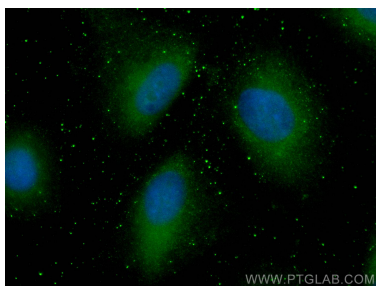
For technical support and original validation data for this product please contact:

T: 4006900926

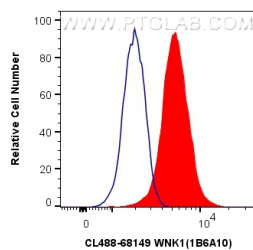
E: Proteintech-CN@ptglab.comW: ptgcn.com

This product is exclusively available under Proteintech Group brand and is not available to purchase from any other manufacturer.

Selected Validation Data



Immunofluorescent analysis of (-20°C Methanol) fixed A549 cells using CoraLite® Plus 488 WNK1 antibody (CL488-68149, Clone: 1B6A10) at dilution of 1:200.



1X10⁶ HEK-293T cells were intracellularly stained with 0.8 ug CoraLite® Plus 488 Anti-Human WNK1 (CL488-68149, Clone:1B6A10) (red), or 0.8 ug CoraLite® Plus 488 Mouse IgG2a Isotype Control (C1.18.4) (CL488-65208, Clone: C1.18.4) (blue). Cells were fixed with 4% PFA and permeabilized with Flow Cytometry Perm Buffer (PF00011-C).