

CoraLite® Plus 488-conjugated HBS1L Monoclonal antibody

Catalog Number: **CL488-68146**

Basic Information

Catalog Number:

CL488-68146

Size:

1000 µg/ml

Source:

Mouse

Isotype:

IgG1

Immunogen Catalog Number:

AG0388

GenBank Accession Number:

BC001465

GeneID (NCBI):

10767

UNIPROT ID:

Q9Y450

Full Name:

HBS1-like (S. cerevisiae)

Calculated MW:

75 kDa

Observed MW:

75 kDa

Purification Method:

Protein G purification

CloneNo.:

1A10C4

Recommended Dilutions:

IF/ICC 1:50-1:500

**Excitation/Emission maxima
wavelengths:**

493 nm / 522 nm

Applications

Tested Applications:

IF/ICC

Species Specificity:

Human

Positive Controls:

IF/ICC : U2OS cells,

Background Information

HBS1L (HBS1-like), also known as EF-1a or ERFS, is a 684 amino acid protein that belongs to the GTP-binding elongation factor family and exists as multiple alternatively spliced isoforms. Expressed in kidney, brain, heart, placenta, liver, muscle and pancreas, HSB1L is thought to play a role in controlling fetal hemoglobin levels, specifically influencing platelet, monocyte and erythrocyte hemoglobin content. The gene encoding HBS1L maps to a locus on human chromosome 6 that is associated with sickle cell anemia and beta-thalassemia, suggesting a role for HBS1L in the pathogenesis of blood disorders. This antibody specifically recognizes the 75kd human HBS1L protein.

Storage

Storage:

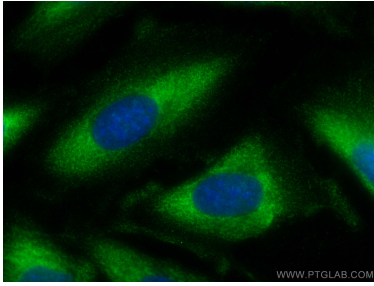
Store at -20°C. Avoid exposure to light. Stable for one year after shipment.

Storage Buffer:

PBS with 50% Glycerol, 0.05% Proclin300, 0.5% BSA, pH 7.3.

Aliquoting is unnecessary for -20°C storage

Selected Validation Data



Immunofluorescent analysis of (-20°C Ethanol) fixed U2OS cells using CoraLite® Plus 488 HBS1L antibody (CL488-68146, Clone: 1A10C4) at dilution of 1:100.