

# CoraLite<sup>®</sup> Plus 488-conjugated MYL6 Monoclonal antibody

Catalog Number: CL488-68142

Featured Product

## Basic Information

**Catalog Number:**

CL488-68142

**Size:**

1000 µg/ml

**Source:**

Mouse

**Isotype:**

IgG1

**Immunogen Catalog Number:**

AG13091

**GenBank Accession Number:**

BC006781

**GeneID (NCBI):**

4637

**UNIPROT ID:**

P60660

**Full Name:**myosin, light chain 6, alkali, smooth  
muscle and non-muscle**Calculated MW:**

17 kDa

**Observed MW:**

17-25 kDa

**Purification Method:**

Protein G purification

**CloneNo.:**

2G4C9

**Recommended Dilutions:**

IF/ICC 1:250-1:1000

**Excitation/Emission maxima  
wavelengths:**

493 nm / 522 nm

## Applications

**Tested Applications:**

IF/ICC

**Species Specificity:**

Human, mouse, rat, pig, rabbit

**Positive Controls:**

IF/ICC : HeLa cells,

## Background Information

Myosin is a hexameric ATPase cellular motor protein. It is composed of two heavy chains, two nonphosphorylatable alkali light chains, and two phosphorylatable regulatory light chains. MYL6 (Myosin light polypeptide 6), encodes a myosin alkali light chain that is expressed in smooth muscle and non-muscle tissues. Expression of MYL6 is high in fibroblasts and myoblasts (PMID:8188229, 2304459, 2722814).

## Storage

**Storage:**

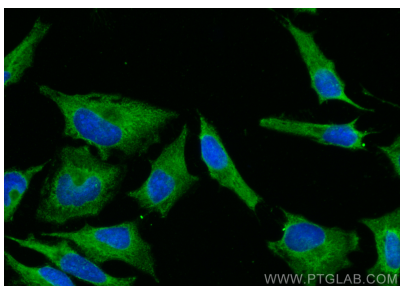
Store at -20°C. Avoid exposure to light. Stable for one year after shipment.

**Storage Buffer:**

PBS with 50% Glycerol, 0.05% Proclin300, 0.5% BSA, pH 7.3.

Aliquoting is unnecessary for -20°C storage

## Selected Validation Data



Immunofluorescent analysis of (-20°C Methanol) fixed HeLa cells using CoraLite® Plus 488 MYL6 antibody (CL488-68142, Clone: 2G4C9 ) at dilution of 1:500.