

For Research Use Only

# CoraLite® Plus 488-conjugated TACSTD2/TROP2 Monoclonal antibody

Catalog Number: CL488-68141



## Basic Information

Catalog Number:

CL488-68141

Size:

1000 ug/ml

Source:

Mouse

Isotype:

IgG2b

Immunogen Catalog Number:

AG25775

GenBank Accession Number:

BC009409

GeneID (NCBI):

4070

UNIPROT ID:

P09758

Full Name:

tumor-associated calcium signal  
transducer 2

Calculated MW:

36 kDa

Observed MW:

40-50 kDa

Purification Method:

Protein A purification

CloneNo.:

5A6B1

Recommended Dilutions:

IF/ICC 1:50-1:500

Excitation/Emission maxima  
wavelengths:

493 nm / 522 nm

## Applications

Tested Applications:

IF/ICC

Species Specificity:

human

Positive Controls:

IF/ICC : HaCaT cells,

## Background Information

Trophoblast cell surface antigen 2 (TROP2), also named as TACSTD2, is a transmembrane glycoprotein. TROP2 plays a role in transducing intracellular calcium signals. It is expressed in trophoblast cells, cornea and multi-stratified epithelia. TROP2 is overexpressed in most carcinomas and is involved in cancer proliferation, migration, invasion, and metastasis. Congenital mutations of TROP2 cause a rare autosomal recessive disease which may lead to blindness-the gelatinous drop-like corneal disease (PMID: 35688908).

## Storage

Storage:

Store at -20°C. Avoid exposure to light. Stable for one year after shipment.

Storage Buffer:

PBS with 50% Glycerol, 0.05% Proclin300, 0.5% BSA, pH 7.3.

Aliquoting is unnecessary for -20°C storage

For technical support and original validation data for this product please contact:

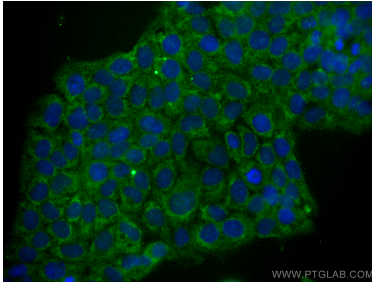
T: 4006900926

E: [Proteintech-CN@ptglab.com](mailto:Proteintech-CN@ptglab.com)

W: [ptgcn.com](http://ptgcn.com)

This product is exclusively available under Proteintech Group brand and is not available to purchase from any other manufacturer.

## Selected Validation Data



Immunofluorescent analysis of (-20°C Methanol)  
fixed HaCaT cells using CoraLite® Plus 488  
TACSTD2/TROP2 antibody (CL488-68141, Clone:  
5A6B1 ) at dilution of 1:200.