

For Research Use Only

CoraLite® Plus 488-conjugated MYDGF/C19orf10 Monoclonal antibody



Catalog Number: **CL488-68131**

Basic Information

Catalog Number: CL488-68131	GenBank Accession Number: BC010129	Purification Method: Protein G purification
Size: 1000 µg/ml	GeneID (NCBI): 56005	CloneNo.: 1H8F4
Source: Mouse	UNIPROT ID: Q969H8	Recommended Dilutions: IF 1:50-1:500
Isotype: IgG1	Full Name: chromosome 19 open reading frame 10	Excitation/Emission maxima wavelengths: 493 nm / 522 nm
Immunogen Catalog Number: AG13438	Calculated MW: 173 aa, 19 kDa	
	Observed MW: 15-19 kDa	

Applications

Tested Applications:

FC (Intra), IF/ICC

Species Specificity:

Human, Mouse, Rat

Positive Controls:

IF : HepG2 cells,

Background Information

Myeloid-derived growth factor (MYDGF), also named as chromosome 19 open reading frame 10 (C19orf10), is an FLS-derived protein that is secreted into the synovial fluid. MYDGF as a paracrine-acting protein secreted from monocytes/macrophages that improves tissue repair and heart function after myocardial infarction. MYDGF has been reported to regulates neutrophil motility in interstitial tissue damage(PMID: 34047769).

Storage

Storage:

Store at -20°C. Avoid exposure to light. Stable for one year after shipment.

Storage Buffer:

PBS with 50% Glycerol, 0.05% Proclin300, 0.5% BSA, pH 7.3.

Aliquoting is unnecessary for -20°C storage

For technical support and original validation data for this product please contact:

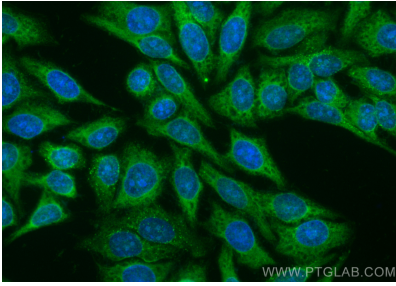
T: 4006900926

E: Proteintech-CN@ptglab.com

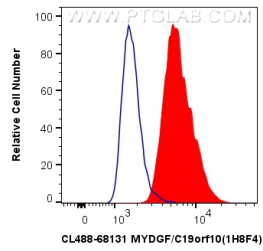
W: ptgcn.com

This product is exclusively available under Proteintech Group brand and is not available to purchase from any other manufacturer.

Selected Validation Data



Immunofluorescent analysis of (-20°C Ethanol) fixed HepG2 cells using CoraLite® Plus 488 MYDGF/C19orf10 antibody (CL488-68131, Clone: 1H8F4) at dilution of 1:200.



1X10⁶ HepG2 cells were intracellularly stained with 0.8 ug CoraLite® Plus 488 Anti-Human MYDGF/C19orf10 (CL488-68131, Clone:1H8F4) (red), or 0.8 ug CoraLite® Plus 488 Mouse IgG1 Isotype Control (MOPC-21) (CL488-65124, Clone: MOPC-21) (blue). Cells were fixed with 4% PFA and permeabilized with Flow Cytometry Perm Buffer (PF00011-C).