

CoraLite® Plus 488-conjugated RYBP

Monoclonal antibody

Catalog Number: **CL488-68130**

Basic Information

Catalog Number:

CL488-68130

Size:

1000 µg/ml

Source:

Mouse

Isotype:

IgG1

Immunogen Catalog Number:

AG31715

GenBank Accession Number:

BC014959

GeneID (NCBI):

23429

UNIPROT ID:

Q8N488

Full Name:

RING1 and YY1 binding protein

Calculated MW:

228 aa, 25 kDa

Observed MW:

32 kDa

Purification Method:

Protein G purification

CloneNo.:

2C6G7

Excitation/Emission maxima wavelengths:

493 nm / 522 nm

Applications

Tested Applications:

FC (Intra)

Species Specificity:

Human, mouse

Background Information

Polycomb repressive complexes (PRCs) are important chromatin regulators of embryonic stem (ES) cell function [PMID:22269950]. RYBP binds Polycomb H2A monoubiquitin ligases Ring1A and Ring1B and has been suggested to assist PRC localization to their targets. RYBP, firstly identified as a direct interactor with Ring1A, acts as transcriptional repressor in reporter assays, both in tissue culture cells and in the fly [PMID:16125914]

Storage

Storage:

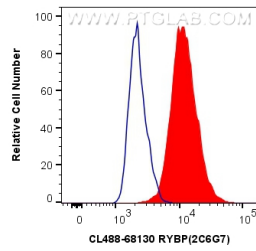
Store at -20°C. Avoid exposure to light. Stable for one year after shipment.

Storage Buffer:

PBS with 50% Glycerol, 0.05% Proclin300, 0.5% BSA, pH 7.3.

Aliquoting is unnecessary for -20°C storage

Selected Validation Data



1X10⁶ A431 cells were intracellularly stained with 0.8 ug CoraLite® Plus 488 Anti-Human RYBP (CL488-68130, Clone:2C6G7) (red), or 0.8 ug CoraLite® Plus 488 Mouse IgG1 Isotype Control (MOPC-21) (CL488-65124, Clone: MOPC-21) (blue). Cells were fixed with 4% PFA and permeabilized with Flow Cytometry Perm Buffer (PF00011-C).