

For Research Use Only

# CoraLite® Plus 488-conjugated Annexin A11 Monoclonal antibody



Catalog Number: CL488-68089

## Basic Information

<b>Catalog Number:</b> CL488-68089	<b>GenBank Accession Number:</b> BC007564	<b>Purification Method:</b> Protein G purification
<b>Size:</b> 1000 µg/ml	<b>GeneID (NCBI):</b> 311	<b>CloneNo.:</b> 1A3C4
<b>Source:</b> Mouse	<b>UNIPROT ID:</b> P50995	<b>Recommended Dilutions:</b> IF 1:50-1:500
<b>Isotype:</b> IgG1	<b>Full Name:</b> annexin A11	<b>Excitation/Emission maxima wavelengths:</b> 493 nm / 522 nm
<b>Immunogen Catalog Number:</b> AG31839	<b>Calculated MW:</b> 56 kDa	

## Applications

<b>Tested Applications:</b> FC (Intra), IF/ICC	<b>Positive Controls:</b> IF : HeLa cells,
<b>Species Specificity:</b> Human, mouse, rat, rabbit, pig	

## Background Information

Annexin A11 (Anxa11) is one member of annexins that are Ca<sup>2+</sup>-regulated phospholipid-binding proteins. Annexin A11 plays an important role in cell division, differentiation, apoptosis, vesicle trafficking and Ca<sup>2+</sup> signaling. Annexin A11 dysregulation is involved in the progression, drug-resistance, recurrence of systemic autoimmune disease and cancer.

## Storage

**Storage:**  
Store at -20°C. Avoid exposure to light. Stable for one year after shipment.  
**Storage Buffer:**  
PBS with 50% Glycerol, 0.05% Proclin300, 0.5% BSA, pH 7.3.  
**Aliquoting is unnecessary for -20°C storage**

For technical support and original validation data for this product please contact:

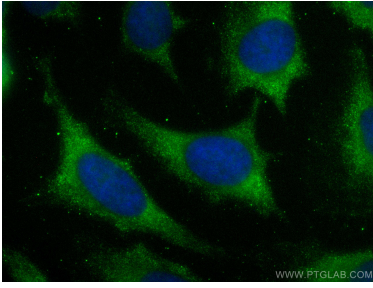
T: 4006900926

E: [Proteintech-CN@ptglab.com](mailto:Proteintech-CN@ptglab.com)

W: [ptgcn.com](http://ptgcn.com)

**This product is exclusively available under Proteintech Group brand and is not available to purchase from any other manufacturer.**

## Selected Validation Data



Immunofluorescent analysis of (-20°C Methanol) fixed HeLa cells using CoraLite® Plus 488 Annexin A11 antibody (CL488-68089, Clone: 1A3C4) at dilution of 1:200.

1X10<sup>6</sup> HeLa cells were intracellularly stained with 0.4 ug CoraLite® Plus 488 Anti-Human Annexin A11 (CL488-68089, Clone:1A3C4) (red), or 0.4 ug CoraLite® Plus 488 Mouse IgG1 Isotype Control (MOPC-21) (CL488-65124, Clone: MOPC-21) (blue). Cells were fixed with 4% PFA and permeabilized with Flow Cytometry Perm Buffer (PF00011-C).

1X10<sup>6</sup> HEK-293T cells were intracellularly stained with 0.8 ug CoraLite® Plus 488 Anti-Human Annexin A11 (CL488-68089, Clone:1A3C4) (red), or 0.8 ug CoraLite® Plus 488 Mouse IgG1 Isotype Control (MOPC-21) (CL488-65124, Clone: MOPC-21) (blue). Cells were fixed with 4% PFA and permeabilized with Flow Cytometry Perm Buffer (PF00011-C).