

For Research Use Only

CoraLite® Plus 488-conjugated LASP1 Monoclonal antibody



Catalog Number: **CL488-68080**

Basic Information

Catalog Number:

CL488-68080

Size:

1000 µg/ml

Source:

Mouse

Isotype:

IgG1

Immunogen Catalog Number:

AG18101

GenBank Accession Number:

BC012460

GeneID (NCBI):

3927

ENSEMBL Gene ID:

ENSG00000002834

UNIPROT ID:

Q14847

Full Name:

LIM and SH3 protein 1

Calculated MW:

30 kDa

Observed MW:

35-38 kDa

Purification Method:

Protein G purification

CloneNo.:

1G4B6

Recommended Dilutions:

IF/ICC 1:50-1:500

Excitation/Emission maxima
wavelengths:

493 nm / 522 nm

Applications

Tested Applications:

IF/ICC, FC (Intra)

Species Specificity:

human

Positive Controls:

IF/ICC : A549 cells,

Background Information

Storage

Storage:

Store at -20°C. Avoid exposure to light. Stable for one year after shipment.

Storage Buffer:

PBS with 50% Glycerol, 0.05% Proclin300, 0.5% BSA, pH 7.3.

Aliquoting is unnecessary for -20°C storage

For technical support and original validation data for this product please contact:

T: 4006900926

E: Proteintech-CN@ptglab.com

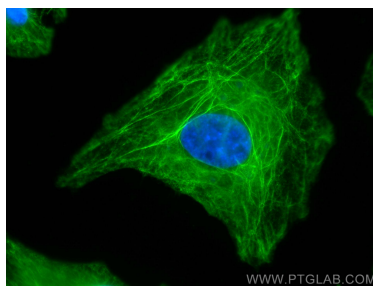
W: ptgcn.com

This product is exclusively available under Proteintech Group brand and is not available to purchase from any other manufacturer.

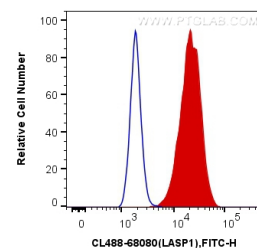
Selected Validation Data



Immunofluorescent analysis of (-20°C Methanol) fixed A549 cells using CoraLite® Plus 488 LASP1 antibody (CL488-68080, Clone: 1G4B6) at dilution of 1:200.



Immunofluorescent analysis of (-20°C Methanol) fixed A549 cells using CoraLite® Plus 488 LASP1 antibody (CL488-68080, Clone: 1G4B6) at dilution of 1:200.



1X10⁶ A549 cells were intracellularly stained with 0.4 ug CoraLite® Plus 488 Anti-Human LASP1 (CL488-68080, Clone:1G4B6) (red), or 0.4 ug Control Antibody. Cells were fixed with 4% PFA and permeabilized with Flow Cytometry Perm Buffer (PF00011-C).