

For Research Use Only

# CoraLite® Plus 488-conjugated STRA8 Monoclonal antibody



Catalog Number: CL488-68071

## Basic Information

Catalog Number:

CL488-68071

Size:

1000 µg/ml

Source:

Mouse

Isotype:

IgG1

Immunogen Catalog Number:

AG29680

GenBank Accession Number:

NM\_182489

GeneID (NCBI):

346673

UNIPROT ID:

Q7Z7C7

Full Name:

stimulated by retinoic acid gene 8  
homolog (mouse)

Calculated MW:

37 kDa

Observed MW:

43-60 kDa

Purification Method:

Protein G purification

CloneNo.:

1D7E3

Recommended Dilutions:

IF 1:50-1:500

Excitation/Emission maxima  
wavelengths:

493 nm / 522 nm

## Applications

Tested Applications:

IF/ICC

Species Specificity:

Human, rabbit, mouse

Positive Controls:

IF : NCCIT cells,

## Background Information

Stimulated by retinoic acid 8 (Stra8), one of genes induced by retinoic acid (RA), is required for the meiotic initiation of male spermatogenesis. Stimulated by Retinoic Acid Gene 8 (STRA8) protein has been proposed as the molecular effector of Retinoic Acid (RA) involved in meiosis-inductive activity. Stra8 is a 45-kDa vertebrate-specific gene, without significant homologous proteins, expressed in the cytoplasm and nuclei of germ cells between mitosis and meiosis and presents exclusively in the embryonic and postnatal gonads of mammals. (PMID: 30106128, PMID: 31253359)

## Storage

Storage:

Store at -20°C. Avoid exposure to light. Stable for one year after shipment.

Storage Buffer:

PBS with 50% Glycerol, 0.05% Proclin300, 0.5% BSA, pH 7.3.

Aliquoting is unnecessary for -20°C storage

For technical support and original validation data for this product please contact:

T: 4006900926

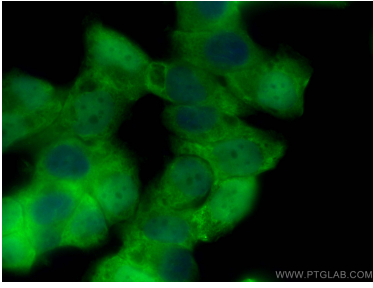
E: Proteintech-CN@ptglab.com

W: ptgcn.com

This product is exclusively available under Proteintech Group brand and is not available to purchase from any other manufacturer.

---

## Selected Validation Data



Immunofluorescent analysis of (4% PFA) fixed NCCIT cells using CoraLite® Plus 488 STRA8 antibody (CL488-68071, Clone: 1D7E3 ) at dilution of 1:200.