

For Research Use Only

CoraLite® Plus 488-conjugated ARF1 Monoclonal antibody



Catalog Number:CL488-68069

Basic Information

Catalog Number: CL488-68069	GenBank Accession Number: BC009247	Purification Method: Protein G purification
Size: 1000 µg/ml	GeneID (NCBI): 375	CloneNo.: 1C10E3
Source: Mouse	UNIPROT ID: P84077	Recommended Dilutions: IF 1:50-1:500
Isotype: IgG1	Full Name: ADP-ribosylation factor 1	Excitation/Emission maxima wavelengths: 493 nm / 522 nm
Immunogen Catalog Number: AG28021	Calculated MW: 21 kDa	
	Observed MW: 18-21 kDa	

Applications

Tested Applications: FC (Intra), IF/ICC	Positive Controls: IF : HeLa cells,
Species Specificity: Human, mouse, rat, rabbit	

Background Information

ADP-ribosylation factors (ARFs) are members of the ARF family of GTP-binding proteins of the Ras superfamily. ARFs bind and regulate GTP/GDP cycle by alternating between the active GTP-bound and inactive GDP-bound conformations. ARF family proteins are essential and ubiquitous in eukaryotes. Six highly conserved members of the family have been identified in mammalian cells. They function in vesicular traffic and actin remodelling and other bioprocesses in cells. The ARF1 protein is localized to the Golgi apparatus and has a central role in intra-Golgi transport. It mainly functions in coat recruitment.(PMID: 7759471, PMID: 16042562).

Storage

Storage:
Store at -20°C. Avoid exposure to light. Stable for one year after shipment.
Storage Buffer:
PBS with 50% Glycerol, 0.05% Proclin300, 0.5% BSA, pH 7.3.
Aliquoting is unnecessary for -20°C storage

For technical support and original validation data for this product please contact:

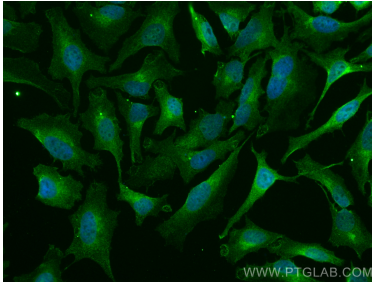
T: 4006900926

E: Proteintech-CN@ptglab.com

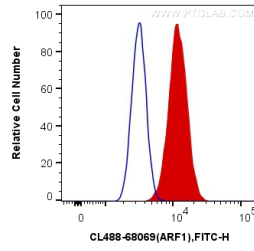
W: ptgcn.com

This product is exclusively available under Proteintech Group brand and is not available to purchase from any other manufacturer.

Selected Validation Data



Immunofluorescent analysis of (4% PFA) fixed HeLa cells using CoraLite® Plus 488 ARF1 antibody (CL488-68069, Clone: 1C10E3) at dilution of 1:200.



1X10⁶ HeLa cells were intracellularly stained with 0.4 ug CoraLite® Plus 488 Anti-Human ARF1 (CL488-68069, Clone:1C10E3) (red), or 0.4 ug Mouse IgG1 Isotype Control (CL488-66360, Clone: T1F8D3F10) (blue). Cells were fixed with 4% PFA and permeabilized with Flow Cytometry Perm Buffer (PF00011-C).