

For Research Use Only

# CoraLite® Plus 488-conjugated TBC1D4 Monoclonal antibody



Catalog Number: CL488-68063

## Basic Information

Catalog Number:

CL488-68063

Size:

1000 µg/ml

Source:

Mouse

Isotype:

IgG1

Immunogen Catalog Number:

AG20341

GenBank Accession Number:

BC151239

GeneID (NCBI):

9882

UNIPROT ID:

O60343

Full Name:

TBC1 domain family, member 4

Calculated MW:

1299 aa, 147 kDa

Observed MW:

160 kDa

Purification Method:

Protein G purification

CloneNo.:

1E2H2

Recommended Dilutions:

IF 1:250-1:1000

Excitation/Emission maxima

wavelengths:

493 nm / 522 nm

## Applications

Tested Applications:

IF/ICC

Species Specificity:

Human

Positive Controls:

IF : HeLa cells,

## Background Information

TBC1D4, also named as AS160, KIAA0603, may act as a GTPase-activating protein for RAB2A, RAB8A, RAB10 and RAB14. Isoform 2 promotes insulin-induced glucose transporter SLC2A4/GLUT4 translocation at the plasma membrane, thus increasing glucose uptake.

## Storage

Storage:

Store at -20°C. Avoid exposure to light. Stable for one year after shipment.

Storage Buffer:

PBS with 50% Glycerol, 0.05% Proclin300, 0.5% BSA, pH 7.3.

Aliquoting is unnecessary for -20°C storage

For technical support and original validation data for this product please contact:

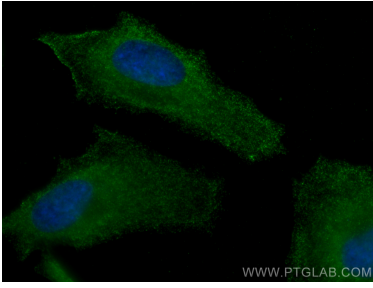
T: 4006900926

E: [Proteintech-CN@ptglab.com](mailto:Proteintech-CN@ptglab.com)

W: [ptgcn.com](http://ptgcn.com)

This product is exclusively available under Proteintech Group brand and is not available to purchase from any other manufacturer.

## Selected Validation Data



Immunofluorescent analysis of (-20°C Methanol) fixed HeLa cells using CoraLite® Plus 488 TBC1D4 antibody (CL488-68063, Clone: 1E2H2) at dilution of 1:500.