

For Research Use Only

CoraLite® Plus 488-conjugated SNCB Monoclonal antibody



Catalog Number: **CL488-68046**

Basic Information

Catalog Number:

CL488-68046

Size:

1000 µg/ml

Source:

Mouse

Isotype:

IgG1

Immunogen Catalog Number:

AG0772

GenBank Accession Number:

BC002902

GeneID (NCBI):

6620

UNIPROT ID:

Q16143

Full Name:

synuclein, beta

Calculated MW:

14 kDa

Observed MW:

18 kDa

Purification Method:

Protein G purification

CloneNo.:

2B10E10

Excitation/Emission maxima
wavelengths:

493 nm / 522 nm

Applications

Tested Applications:

FC (Intra)

Species Specificity:

Human, mouse, rat, pig, rabbit, chicken

Background Information

Storage

Storage:

Store at -20°C. Avoid exposure to light. Stable for one year after shipment.

Storage Buffer:

PBS with 50% Glycerol, 0.05% Proclin300, 0.5% BSA, pH 7.3.

Aliquoting is unnecessary for -20°C storage

For technical support and original validation data for this product please contact:

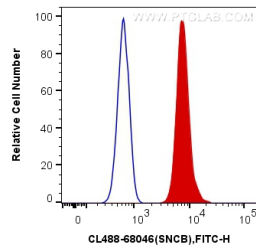
T: 4006900926

E: Proteintech-CN@ptglab.com

W: ptgcn.com

This product is exclusively available under Proteintech Group brand and is not available to purchase from any other manufacturer.

Selected Validation Data



1X10⁶ SH-SY5Y cells were intracellularly stained with 0.4 ug CoraLite® Plus 488 Anti-Human SNCB (CL488-68046, Clone:2B10E10) (red), or 0.4 ug Control Antibody. Cells were fixed with 4% PFA and permeabilized with Flow Cytometry Perm Buffer (PF00011-C).