

CoraLite® Plus 488-conjugated PAIP1 Monoclonal antibody

Catalog Number: **CL488-68042**

Basic Information

Catalog Number:

CL488-68042

Size:

1000 µg/ml

Source:

Mouse

Isotype:

IgG2b

Immunogen Catalog Number:

AG16773

GenBank Accession Number:

BC005295

GeneID (NCBI):

10605

UNIPROT ID:

Q9H074

Full Name:

poly(A) binding protein interacting
protein 1

Calculated MW:

70 kDa

Observed MW:

40-45kDa, 62kDa

Purification Method:

Protein A purification

CloneNo.:

2H9D4

Recommended Dilutions:

IF/ICC 1:50-1:500

**Excitation/Emission maxima
wavelengths:**

493 nm / 522 nm

Applications

Tested Applications:

IF/ICC, FC (Intra)

Species Specificity:

human, mouse, rabbit

Positive Controls:

IF/ICC : HeLa cells,

Background Information

PAIP1 is a PABP-binding protein that contains two distinct PABP-binding motifs (PAMs). PAM1 binds to RNA recognition motif 2 in the N terminus of PABP; PAM2, which is a conserved region comprising approximately 15 amino acids, binds to the PABC domain of PABP. PAIP1 acts as a coactivator in the regulation of translation initiation of poly(A)-containing mRNAs.

Storage

Storage:

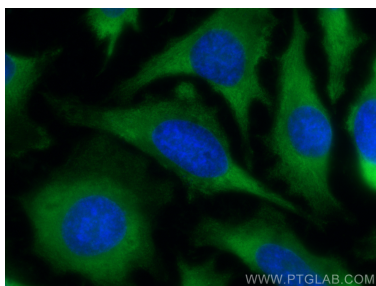
Store at -20°C. Avoid exposure to light.

Storage Buffer:

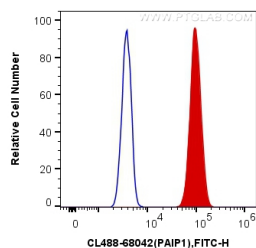
PBS with 50% Glycerol, 0.05% Proclin300, 0.5% BSA, pH 7.3.

Aliquoting is unnecessary for -20°C storage

Selected Validation Data



Immunofluorescent analysis of (-20°C Methanol) fixed HeLa cells using CoraLite® Plus 488 PAIP1 antibody (CL488-68042, Clone: 2H9D4) at dilution of 1:200.



1X10⁶ HeLa cells were intracellularly stained with 0.4 ug CoraLite® Plus 488 Anti-Human PAIP1 (CL488-68042, Clone:2H9D4) (red), or 0.4 ug Mouse IgG2b Isotype Control (CL488-66360-3, Clone: K11B8C4B5) (blue). Cells were fixed with 4% PFA and permeabilized with Flow Cytometry Perm Buffer (PF00011-C).