

For Research Use Only

# CoraLite® Plus 488-conjugated ZFP36L1 Monoclonal antibody

Catalog Number: CL488-68038



## Basic Information

Catalog Number: CL488-68038	GenBank Accession Number: BC018340	Purification Method: Protein A purification
Source: Mouse	GeneID (NCBI): 677	CloneNo.: 1H6G6
Isotype: IgG2b	UNIPROT ID: Q07352	Recommended Dilutions: IF/ICC: 1:50-1:500
Immunogen Catalog Number: AG30469	Full Name: zinc finger protein 36, C3H type-like 1	FC (Intra): 0.40 ug per 10 <sup>6</sup> cells in a 100 µl suspension
	Calculated MW: 338 aa, 36 kDa	Excitation/Emission maxima wavelengths: 493 nm / 522 nm
	Observed MW: 36 kDa	

## Applications

Tested Applications: IF/ICC, FC (Intra)	Positive Controls:
Species Specificity: human, rat	IF/ICC : HepG2 cells, FC (Intra) : HeLa cells,

## Background Information

As a member of the Tristetraprolin (TTP) RNA binding protein family, ZFP36L1 regulate gene expression post-transcriptionally by promoting mRNA decay. In mammals, ZFP36L1 and its family members have been shown to regulate development, cell differentiation, cell cycle, apoptosis and anti-cancer capability by targeting an extensive overlapping repertoire of mRNAs.

## Storage

**Storage:**  
Store at -20°C. Avoid exposure to light. Stable for one year after shipment.  
**Storage Buffer:**  
PBS with 50% glycerol, 0.05% Proclin300, 0.5% BSA, pH7.3  
Aliquoting is unnecessary for -20°C storage

For technical support and original validation data for this product please contact:

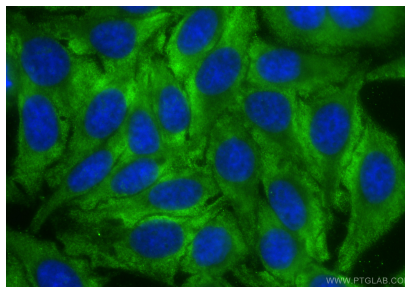
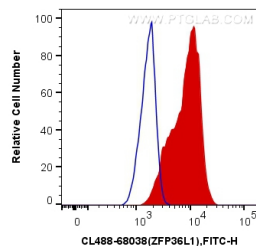
T: 4006900926

E: [Proteintech-CN@ptglab.com](mailto:Proteintech-CN@ptglab.com)

W: [ptgcn.com](http://ptgcn.com)

This product is exclusively available under Proteintech Group brand and is not available to purchase from any other manufacturer.

## Selected Validation Data



1X10<sup>6</sup> HeLa cells were intracellularly stained with 0.4 ug CoraLite® Plus 488 Anti-Human ZFP36L1 (CL488-68038, Clone:1H6G6) (red), or 0.4 ug Mouse IgG2b Isotype Control (CL488-66360-3, Clone: K11B8C4B5) (blue). Cells were fixed with 4% PFA and permeabilized with Flow Cytometry Perm Buffer.

Immunofluorescent analysis of (-20°C Ethanol) fixed HepG2 cells using CoraLite® Plus 488 ZFP36L1 antibody (CL488-68038, Clone: 1H6G6 ) at dilution of 1:200.