

For Research Use Only

CoraLite® Plus 488-conjugated PGK1 Monoclonal antibody

Catalog Number: CL488-68035



Basic Information

Catalog Number:

CL488-68035

Concentration:

1000 ug/ml

Source:

Mouse

Isotype:

IgG1

Immunogen Catalog Number:

AG12099

GenBank Accession Number:

BC103752

GeneID (NCBI):

5230

UNIPROT ID:

P00558

Full Name:

phosphoglycerate kinase 1

Calculated MW:

417 aa, 45 kDa

Observed MW:

40-45 kDa

Purification Method:

Protein G purification

CloneNo.:

1B2F3

Recommended Dilutions:

IF/ICC 1:50-1:500

Excitation/Emission maxima

wavelengths:

493 nm / 522 nm

Applications

Tested Applications:

IF/ICC, FC (Intra)

Species Specificity:

human

Positive Controls:

IF/ICC : A431 cells, HepG2 cells

Background Information

PGK1, also known as PGKA, belongs to the phosphoglycerate kinase family. PGK1 is the first ATP-generating enzyme in glycolysis, which catalyzes the conversion of 1,3-diphosphoglycerate (1,3-BPG) to 3-phosphoglycerate (3-PG) and produces one molecule of ATP. PGK1 has other functions besides regulating glycolytic metabolism, including mediating autophagy initiation, DNA replication and repair in mammal cell nuclei. PGK1 has 2 isoforms with the molecular mass of 41 and 45 kDa (PMID: 31815035, PMID: 31911580).

Storage

Storage:

Store at -20°C. Avoid exposure to light. Stable for one year after shipment.

Storage Buffer:

PBS with 50% glycerol, 0.05% Proclin300, 0.5% BSA, pH7.3

Aliquoting is unnecessary for -20°C storage

For technical support and original validation data for this product please contact:

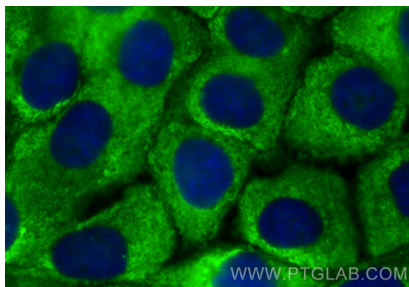
T: 4006900926

E: Proteintech-CN@ptglab.com

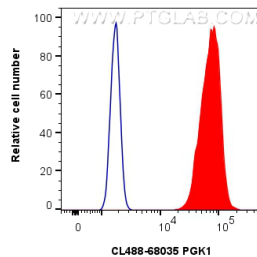
W: ptgcn.com

This product is exclusively available under Proteintech Group brand and is not available to purchase from any other manufacturer.

Selected Validation Data



Immunofluorescent analysis of (-20°C Methanol) fixed A431 cells using CoraLite® Plus 488 PGK1 antibody (CL488-68035, Clone: 1B2F3) at dilution of 1:200.



1x10⁶ HeLa cells were intracellularly stained with 0.8 ug CoraLite® Plus 488-conjugated PGK1 Monoclonal antibody (CL488-68035, Clone:1B2F3) (red), or 0.8 ug CoraLite® Plus 488 Mouse IgG1 Isotype Control (1F8D3) (CL488-66360-1, Clone: 1F8D3) (blue). Cells were fixed with 4% PFA and permeabilized with Flow Cytometry Perm Buffer (PF00011-C).