

CoraLite® Plus 488-conjugated DUSP22 Monoclonal antibody

Catalog Number: **CL488-68032**

Basic Information

Catalog Number:

CL488-68032

Size:

1000 µg/ml

Source:

Mouse

Isotype:

IgG2a

Immunogen Catalog Number:

AG9831

GenBank Accession Number:

BC022847

GeneID (NCBI):

56940

UNIPROT ID:

Q9NRW4

Full Name:

dual specificity phosphatase 22

Calculated MW:

184 aa, 21 kDa

Observed MW:

21 kDa

Purification Method:

Protein A purification

CloneNo.:

3B8F1

Recommended Dilutions:

IF/ICC 1:50-1:500

**Excitation/Emission maxima
wavelengths:**

493 nm / 522 nm

Applications

Tested Applications:

IF/ICC

Species Specificity:

Human, Mouse, Rat, Rabbit

Positive Controls:

IF/ICC : NIH/3T3 cells,

Background Information

DUSP22(Dual specificity protein phosphatase 22) is also named as JSP1, LMWDSP2, MKPX. It has been demonstrated to belong to a new subgroup of small DSPs anchored at the membranes by an N-terminal myristic acid moiety and DUSP22 play a regulatory role in the JNK or p38 MAPK pathways(PMID:17384676). It has 2 isoforms produced by alternative splicing with the molecular weight of 21 kDa and 23 kDa.

Storage

Storage:

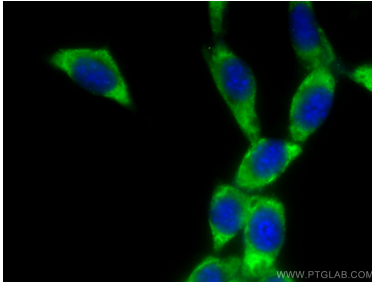
Store at -20°C. Avoid exposure to light. Stable for one year after shipment.

Storage Buffer:

PBS with 50% Glycerol, 0.05% Proclin300, 0.5% BSA, pH 7.3.

Aliquoting is unnecessary for -20°C storage

Selected Validation Data



Immunofluorescent analysis of (-20°C Methanol)
fixed NIH/3T3 cells using CoraLite® Plus 488
DUSP22 antibody (CL488-68032, Clone: 3B8F1) at
dilution of 1:100.