

CoraLite® Plus 488-conjugated RAB9B Monoclonal antibody

Catalog Number: **CL488-68031**

Basic Information

Catalog Number: CL488-68031	GenBank Accession Number: BC093756	Purification Method: Protein G purification
Size: 1000 µg/ml	GeneID (NCBI): 51209	CloneNo.: 1F11A2
Source: Mouse	UNIPROT ID: Q9NP90	Recommended Dilutions: IF/ICC 1:50-1:500
Isotype: IgG1	Full Name: RAB9B, member RAS oncogene family	Excitation/Emission maxima wavelengths: 493 nm / 522 nm
Immunogen Catalog Number: AG12862	Calculated MW: 201 aa, 23 kDa	
	Observed MW: 23 kDa	

Applications

Tested Applications: IF/ICC	Positive Controls: IF/ICC : HeLa cells,
Species Specificity: Human	

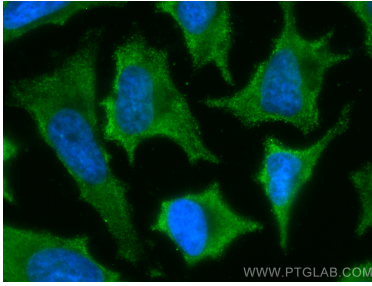
Background Information

RAB9B, also named as RAB9L, is involved in the transport of proteins between the endosomes and the trans Golgi network. RAB9B belongs to the Ras-related superfamily of guanine nucleotide binding proteins, which includes the Ral/Rec, Rap, R-Ras, and Rho/Rab subfamilies

Storage

Storage:
Store at -20°C. Avoid exposure to light. Stable for one year after shipment.
Storage Buffer:
PBS with 50% Glycerol, 0.05% Proclin300, 0.5% BSA, pH 7.3.
Aliquoting is unnecessary for -20°C storage

Selected Validation Data



Immunofluorescent analysis of (-20°C Methanol) fixed HeLa cells using CoraLite® Plus 488 RAB9B antibody (CL488-68031, Clone: 1F11A2) at dilution of 1:200.