

For Research Use Only

CoraLite® Plus 488-conjugated CRMP1 Monoclonal antibody

Catalog Number: CL488-68021



Basic Information

Catalog Number: CL488-68021	GenBank Accession Number: BC000252	Purification Method: Protein A purification
Size: 1000 ug/ml	GeneID (NCBI): 1400	CloneNo.: 2F4G5
Source: Mouse	UNIPROT ID: Q14194	Recommended Dilutions: IF/ICC 1:50-1:500
Isotype: IgG2a	Full Name: collapsin response mediator protein 1	Excitation/Emission maxima wavelengths: 493 nm / 522 nm
Immunogen Catalog Number: AG30090	Calculated MW: 62 kDa	
	Observed MW: 62 kDa	

Applications

Tested Applications: IF/ICC, FC (Intra)	Positive Controls: IF/ICC : SH-SY5Y cells,
Species Specificity: human, mouse, rat, pig, rabbit, chicken	

Background Information

CRMP1 (Collapsin response mediator protein 1) is also named as DPYSL1, ULIP3, DRP-1 and belongs to the collapsin response mediator protein family, which are a family of five cytoplasmic proteins predominantly expressed in the developing nervous system. CRMP1, the predicted 62 kDa protein and its 74 kDa isoform corresponding to its N-terminal splice variant already described for embryonic, neonatal, and adult brain of the rat are evidenced in the cortex of adult mouse (PMID:15834957). This protein is involved in invasion, and aggressiveness of prolactin pituitary tumors.

Storage

Storage:
Store at -20°C. Avoid exposure to light. Stable for one year after shipment.
Storage Buffer:
PBS with 50% Glycerol, 0.05% Proclin300, 0.5% BSA, pH 7.3.
Aliquoting is unnecessary for -20°C storage

For technical support and original validation data for this product please contact:

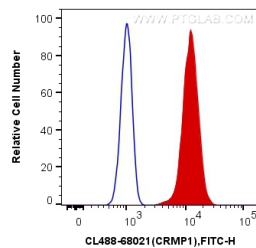
T: 4006900926

E: Proteintech-CN@ptglab.com

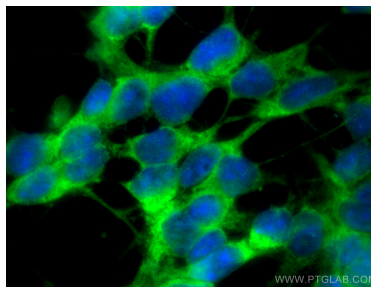
W: ptgcn.com

This product is exclusively available under Proteintech Group brand and is not available to purchase from any other manufacturer.

Selected Validation Data



1X10⁶ U2OS cells were intracellularly stained with 0.4 ug CoraLite® Plus 488 Anti-Human CRMP1 (CL488-68021, Clone:2F4G5) (red), or 0.4 ug Control Antibody. Cells were fixed with 4% PFA and permeabilized with Flow Cytometry Perm Buffer (PF00011-C).



Immunofluorescent analysis of (-20°C Ethanol) fixed SH-SY5Y cells using CoraLite® Plus 488 CRMP1 antibody (CL488-68021, Clone: 2F4G5) at dilution of 1:200.