

# CoraLite® Plus 488-conjugated RAB39B Monoclonal antibody

Catalog Number: **CL488-68014**

## Basic Information

**Catalog Number:**

CL488-68014

**Size:**

1000 µg/ml

**Source:**

Mouse

**Isotype:**

IgG2b

**Immunogen Catalog Number:**

AG27170

**GenBank Accession Number:**

BC009714

**GeneID (NCBI):**

116442

**UNIPROT ID:**

Q96DA2

**Full Name:**

RAB39B, member RAS oncogene family

**Calculated MW:**

213 aa, 25 kDa

**Observed MW:**

25 kDa

**Purification Method:**

Protein A purification

**CloneNo.:**

2F4F7

**Excitation/Emission maxima wavelengths:**

493 nm / 522 nm

## Applications

**Tested Applications:**

FC (Intra)

**Species Specificity:**

human, mouse, rat, pig, rabbit

## Background Information

RAB39B is a member of the RAB GTPase family with a putative role in vesicle trafficking. RAB39B is predominantly expressed in neuronal cells and is localized to the endoplasmic reticulum, Golgi and trans - Golgi recycling endosomes. Several reports suggested that RAB39B may regulate protein trafficking and the PI3K-AKT-mTOR pathway. Mutations in RAB39B are known to be associated with X-linked intellectual disability (XLID), Parkinson's disease, and autism.

## Storage

**Storage:**

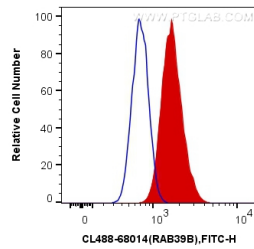
Store at -20°C. Avoid exposure to light. Stable for one year after shipment.

**Storage Buffer:**

PBS with 50% Glycerol, 0.05% Proclin300, 0.5% BSA, pH 7.3.

Aliquoting is unnecessary for -20°C storage

## Selected Validation Data



1X10<sup>6</sup> SH-SY5Y cells were intracellularly stained with 0.4 ug CoraLite® Plus 488 Anti-Human RAB39B (CL488-68014, Clone:2F4F7) (red), or 0.4 ug Control Antibody. Cells were fixed with 4% PFA and permeabilized with Flow Cytometry Perm Buffer (PF00011-C).