

For Research Use Only

CoraLite® Plus 488-conjugated RALY Monoclonal antibody



Catalog Number: CL488-68011

Basic Information

Catalog Number: CL488-68011	GenBank Accession Number: BC103753	Purification Method: Protein G purification
Size: 1000 µg/ml	GeneID (NCBI): 22913	CloneNo.: 2B10C3
Source: Mouse	UNIPROT ID: Q9UKM9	Recommended Dilutions: IF 1:300-1:1200
Isotype: IgG1	Full Name: RNA binding protein, autoantigenic (hnRNP-associated with lethal yellow homolog (mouse))	Excitation/Emission maxima wavelengths: 493 nm / 522 nm
Immunogen Catalog Number: AG12250	Calculated MW: 307 aa, 33 kDa	
	Observed MW: 37 kDa	

Applications

Tested Applications: FC (Intra), IF/ICC	Positive Controls: IF : A431 cells,
Species Specificity: Human	

Background Information

RNA-binding protein RALY is a protein that in humans is encoded by the RALY gene. In infectious mononucleosis, anti-EBNA-1 antibodies are produced which cross-react with multiple normal human proteins. The cross-reactivity is due to anti-gly/ala antibodies that cross-react with host proteins containing configurations like those in the EBNA-1 repeat. One such antigen is RALY which is a member of the heterogeneous nuclear ribonucleoprotein gene family.

Storage

Storage:
Store at -20°C. Avoid exposure to light. Stable for one year after shipment.
Storage Buffer:
PBS with 50% Glycerol, 0.05% Proclin300, 0.5% BSA, pH 7.3.
Aliquoting is unnecessary for -20°C storage

For technical support and original validation data for this product please contact:

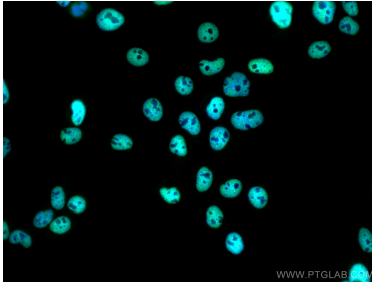
T: 4006900926

E: Proteintech-CN@ptglab.com

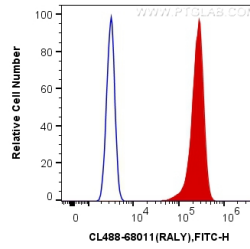
W: ptgcn.com

This product is exclusively available under Proteintech Group brand and is not available to purchase from any other manufacturer.

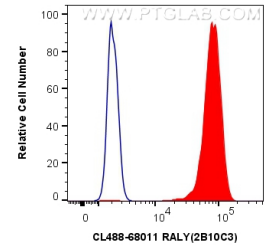
Selected Validation Data



Immunofluorescent analysis of (4% PFA) fixed A431 cells using CoraLite® Plus 488 RALY antibody (CL488-68011, Clone: 2B10C3) at dilution of 1:600.



1X10⁶ A431 cells were intracellularly stained with 0.4 ug CoraLite® Plus 488 Anti-Human RALY (CL488-68011, Clone:2B10C3) (red), or 0.4 ug Control Antibody. Cells were fixed and permeabilized with Transcription Factor Staining Buffer Kit (PF00011).



1X10⁶ A431 cells were intracellularly stained with 0.4 ug CoraLite® Plus 488 Anti-Human RALY (CL488-68011, Clone:2B10C3) (red), or 0.4 ug CoraLite® Plus 488 Mouse IgG1 Isotype Control (MOPC-21) (CL488-65124, Clone: MOPC-21) (blue). Cells were fixed and permeabilized with Transcription Factor Staining Buffer Kit (PF00011).