

For Research Use Only

CoraLite® Plus 488-conjugated RPA2 Monoclonal antibody



Catalog Number: CL488-67999

Basic Information

Catalog Number: CL488-67999	GenBank Accession Number: BC001630	Purification Method: Protein G purification
Size: 1000 µg/ml	GeneID (NCBI): 6118	CloneNo.: 1B9H11
Source: Mouse	UNIPROT ID: P15927	Excitation/Emission maxima wavelengths: 493 nm / 522 nm
Isotype: IgG1	Full Name: replication protein A2, 32kDa	
Immunogen Catalog Number: AG24783	Calculated MW: 29 kDa	
	Observed MW: 30 kDa	

Applications

Tested Applications:
FC (Intra)

Species Specificity:
Human, Mouse, Rat, Pig

Background Information

RPA2, a subunit of the heterotrimeric replication protein A (RPA) complex, is overexpressed in various cancers. RPA2 is a major target for upstream kinases, including CDKs and the three PIKKs (ATR, ataxia-telangiectasia mutated [ATM], and DNA-PK). RPA2 comprises multiple critical Ser/Thr residues that are phosphorylated in sequential order in response to genotoxic stress.

Storage

Storage:
Store at -20°C. Avoid exposure to light. Stable for one year after shipment.

Storage Buffer:
PBS with 50% Glycerol, 0.05% Proclin300, 0.5% BSA, pH 7.3.

Aliquoting is unnecessary for -20°C storage

For technical support and original validation data for this product please contact:

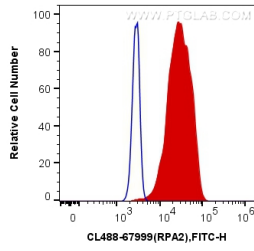
T: 4006900926

E: Proteintech-CN@ptglab.com

W: ptgcn.com

This product is exclusively available under Proteintech Group brand and is not available to purchase from any other manufacturer.

Selected Validation Data



1X10⁶ HeLa cells were intracellularly stained with 0.4 ug CoraLite® Plus 488 Anti-Human RPA2 (CL488-67999, Clone:1B9H11) (red), or 0.4 ug Control Antibody. Cells were fixed and permeabilized with Transcription Factor Staining Buffer Kit (PF00011).