

For Research Use Only

CoraLite® Plus 488-conjugated GPHN Monoclonal antibody

Catalog Number: CL488-67995

Featured Product



Basic Information

Catalog Number:

CL488-67995

Source:

Mouse

Isotype:

IgG1

Immunogen Catalog Number:

AG23708

GenBank Accession Number:

BC030016

GeneID (NCBI):

10243

UNIPROT ID:

Q9NQX3

Full Name:

gephyrin

Calculated MW:

769 aa, 83 kDa

Observed MW:

93 kDa

Purification Method:

Protein G purification

CloneNo.:

1D7C4

Recommended Dilutions:

FC (Intra): 0.40 ug per 10⁶ cells in a 100 µl suspension

Excitation/Emission maxima wavelengths:

493 nm / 522 nm

Applications

Tested Applications:

FC (Intra)

Species Specificity:

human

Positive Controls:

FC (Intra) : HeLa cells,

Background Information

Gephyrin (GPHN) is an organizational protein that clusters and localizes the inhibitory glycine receptor (GlyR) and GABAA receptors to the microtubular matrix of the neuronal postsynaptic membrane. Mice deficient in gephyrin develop a hereditary molybdenum cofactor deficiency and a neurological phenotype that mimics startle disease (hyperekplexia). In non-neuronal tissues, the encoded protein is also required for molybdenum cofactor biosynthesis. Two isoforms produced by alternative splicing have been described. The observed MW of Gephyrin is 93 kDa, larger than the predicated of 83 kDa, which may be due to the modifications on various phosphorylation sites.

Storage

Storage:

Store at -20°C. Avoid exposure to light. Stable for one year after shipment.

Storage Buffer:

PBS with 50% glycerol, 0.05% Proclin300, 0.5% BSA, pH7.3

Aliquoting is unnecessary for -20°C storage

For technical support and original validation data for this product please contact:

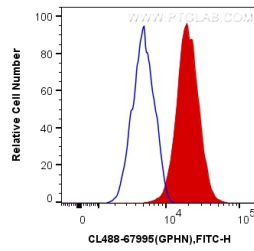
T: 4006900926

E: Proteintech-CN@ptglab.com

W: ptgcn.com

This product is exclusively available under Proteintech Group brand and is not available to purchase from any other manufacturer.

Selected Validation Data



1×10^6 HeLa cells were intracellularly stained with 0.4 μ g CoraLite® Plus 488 Anti-Human GPHN (CL488-67995, Clone:1D7C4) (red), or 0.4 μ g Control Antibody. Cells were fixed with 4% PFA and permeabilized with Flow Cytometry Perm Buffer.