

For Research Use Only

CoraLite® Plus 488-conjugated MON1B Monoclonal antibody



Catalog Number: **CL488-67985**

Featured Product

Basic Information

Catalog Number:

CL488-67985

Size:

1000 µg/ml

Source:

Mouse

Isotype:

IgG2b

Immunogen Catalog Number:

AG9920

GenBank Accession Number:

BC024277

GeneID (NCBI):

22879

UNIPROT ID:

Q7L1V2

Full Name:

MON1 homolog B (yeast)

Calculated MW:

547 aa, 59 kDa

Observed MW:

59 kDa

Purification Method:

Protein A purification

CloneNo.:

3E7C6

Recommended Dilutions:

IF/ICC 1:50-1:500

Excitation/Emission maxima
wavelengths:

493 nm / 522 nm

Applications

Tested Applications:

IF/ICC

Species Specificity:

Human

Positive Controls:

IF/ICC : HeLa cells,

Background Information

Storage

Storage:

Store at -20°C. Avoid exposure to light. Stable for one year after shipment.

Storage Buffer:

PBS with 50% Glycerol, 0.05% Proclin300, 0.5% BSA, pH 7.3.

Aliquoting is unnecessary for -20°C storage

For technical support and original validation data for this product please contact:

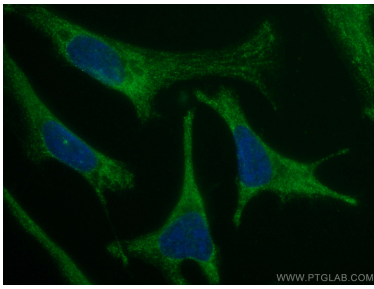
T: 4006900926

E: Proteintech-CN@ptglab.com

W: ptgcn.com

This product is exclusively available under Proteintech Group brand and is not available to purchase from any other manufacturer.

Selected Validation Data



Immunofluorescent analysis of (-20°C Ethanol) fixed HeLa cells using Coralite® Plus 488 MON1B antibody (CL488-67985, Clone: 3E7C6) at dilution of 1:200.