

# CoraLite® Plus 488-conjugated SMARCB1 Monoclonal antibody

Catalog Number: **CL488-67979**

## Basic Information

**Catalog Number:**

CL488-67979

**Size:**

1000 µg/ml

**Source:**

Mouse

**Isotype:**

IgG1

**Immunogen Catalog Number:**

AG28911

**GenBank Accession Number:**

NM\_003073

**GeneID (NCBI):**

6598

**UNIPROT ID:**

Q12824

**Full Name:**

SWI/SNF related, matrix associated, actin dependent regulator of chromatin, subfamily b, member 1

**Calculated MW:**

44 kDa

**Observed MW:**

40-45 kDa

**Purification Method:**

Protein G purification

**CloneNo.:**

1D10A4

**Excitation/Emission maxima wavelengths:**

493 nm / 522 nm

## Applications

**Tested Applications:**

FC (Intra)

**Species Specificity:**

Human, mouse, rat

## Background Information

SMARCB1 is part of a complex that relieves repressive chromatin structures, allowing the transcriptional machinery to access its targets more effectively. The encoded nuclear protein may also bind to and enhance the DNA joining activity of HIV-1 integrase. This gene has been found to be a tumor suppressor and mutations in it have been associated with malignant rhabdoid tumors. Two transcript variants encoding different isoforms have been found for this gene.

## Storage

**Storage:**

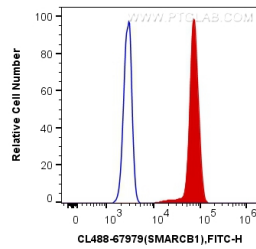
Store at -20°C. Avoid exposure to light. Stable for one year after shipment.

**Storage Buffer:**

PBS with 50% Glycerol, 0.05% Proclin300, 0.5% BSA, pH 7.3.

Aliquoting is unnecessary for -20°C storage

## Selected Validation Data



1X10<sup>6</sup> HeLa cells were intracellularly stained with 0.4 ug CoraLite® Plus 488 Anti-Human SMARCB1 (CL488-67979, Clone:1D10A4) (red), or 0.4 ug Control Antibody. Cells were fixed and permeabilized with Transcription Factor Staining Buffer Kit (PF00011).