

For Research Use Only

CoraLite® Plus 488-conjugated ARHGEF16 Monoclonal antibody



Catalog Number: CL488-67975

Basic Information

Catalog Number: CL488-67975	GenBank Accession Number: BC002681	Purification Method: Protein A purification
Size: 1000 µg/ml	GeneID (NCBI): 27237	CloneNo.: 1D8E3
Source: Mouse	UNIPROT ID: Q5VV41	Recommended Dilutions: IF 1:50-1:500
Isotype: IgG2b	Full Name: Rho guanine exchange factor (GEF) 16	Excitation/Emission maxima wavelenghts: 493 nm / 522 nm
Immunogen Catalog Number: AG28675	Calculated MW: 80 kDa	
	Observed MW: 80 kDa	

Applications

Tested Applications: FC (Intra), IF/ICC	Positive Controls: IF : MCF-7 cells,
Species Specificity: Human	

Background Information

Small GTPases of the Rho family are critical regulators of various cellular functions including actin cytoskeleton organization, activation of kinase cascades, mitogenesis, transcriptional activation and stimulation of DNA synthesis. Rho proteins cycle between a biologically active GTP-bound state and an inactive GDP-bound state. Rho guanine nucleotide exchange factor (GEF) has a crucial role in activating small GTPase by exchange GDP for GTP. ARGEF16 is one of the multiple GEF members. Although the specific function of this protein is not known yet, it is thought to be involved in protein-protein and protein-lipid interactions.

Storage

Storage:
Store at -20°C. Avoid exposure to light. Stable for one year after shipment.
Storage Buffer:
PBS with 50% Glycerol, 0.05% Proclin300, 0.5% BSA, pH 7.3.
Aliquoting is unnecessary for -20°C storage

For technical support and original validation data for this product please contact:

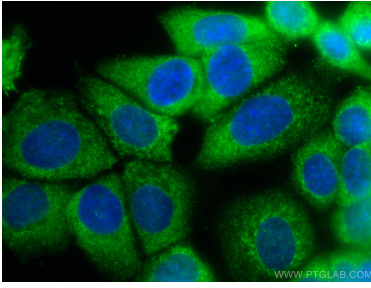
T: 4006900926

E: Proteintech-CN@ptglab.com

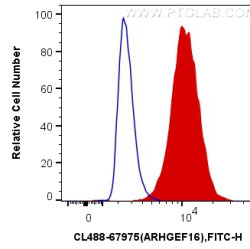
W: ptgcn.com

This product is exclusively available under Proteintech Group brand and is not available to purchase from any other manufacturer.

Selected Validation Data



Immunofluorescent analysis of (-20°C Methanol) fixed MCF-7 cells using CoraLite® Plus 488 ARHGEF16 antibody (CL488-67975, Clone: 1D8E3) at dilution of 1:200.



1X10⁶ MCF-7 cells were intracellularly stained with 0.4 ug CoraLite® Plus 488 Anti-Human ARHGEF16 (CL488-67975, Clone:1D8E3) (red), or 0.4 ug Mouse IgG2b Isotype Control (CL488-66360-3, Clone: K11B8C4B5) (blue). Cells were fixed with 4% PFA and permeabilized with Flow Cytometry Perm Buffer (PF00011-C).