

For Research Use Only

CoraLite® Plus 488-conjugated MFSD2 Monoclonal antibody



Catalog Number: CL488-67965

Basic Information

Catalog Number: CL488-67965	GenBank Accession Number: BC092414	Purification Method: Protein A purification
Size: 1000 µg/ml	GeneID (NCBI): 84879	CloneNo.: 2D2B4
Source: Mouse	UNIPROT ID: Q8NA29	Recommended Dilutions: IF 1:50-1:500
Isotype: IgG2a	Full Name: major facilitator superfamily domain containing 2	Excitation/Emission maxima wavelengths: 493 nm / 522 nm
Immunogen Catalog Number: AG31028	Calculated MW: 543 aa, 60 kDa	
	Observed MW: 60 kDa	

Applications

Tested Applications:

IF-P

Species Specificity:

Human, mouse

Positive Controls:

IF : mouse brain tissue,

Background Information

MFSD2, also named as MFSD2A, belongs to a large family of presumptive carbohydrate transporters with 10-12 membrane-spanning domains, is located at chromosomal position 1p34.2, and is conserved in evolution. It plays a role in thermogenesis via beta-adrenergic signaling pathway. It may be the main plasma membrane tunicamycin transporter. MFSD2 has three isoforms with MW 50 kDa and 59-60 kDa.

Storage

Storage:

Store at -20°C. Avoid exposure to light. Stable for one year after shipment.

Storage Buffer:

PBS with 50% Glycerol, 0.05% Proclin300, 0.5% BSA, pH 7.3.

Aliquoting is unnecessary for -20°C storage

For technical support and original validation data for this product please contact:

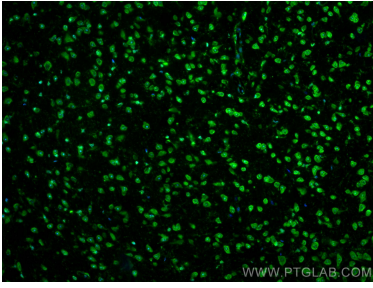
T: 4006900926

E: Proteintech-CN@ptglab.com

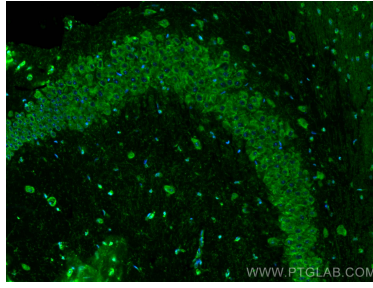
W: ptgcn.com

This product is exclusively available under Proteintech Group brand and is not available to purchase from any other manufacturer.

Selected Validation Data



Immunofluorescent analysis of (4% PFA) fixed mouse brain tissue using CoraLite® Plus 488 MFSD2 antibody (CL488-67965, Clone: 2D2B4) at dilution of 1:200.



Immunofluorescent analysis of (4% PFA) fixed mouse brain tissue using CoraLite® Plus 488 MFSD2 antibody (CL488-67965, Clone: 2D2B4) at dilution of 1:200.