

For Research Use Only

# CoraLite® Plus 488-conjugated SHMT1 Monoclonal antibody



Catalog Number: CL488-67963

## Basic Information

Catalog Number:

CL488-67963

Size:

1000 µg/ml

Source:

Mouse

Isotype:

IgG1

Immunogen Catalog Number:

AG5833

GenBank Accession Number:

BC038598

GeneID (NCBI):

6470

UNIPROT ID:

P34896

Full Name:

serine hydroxymethyltransferase 1 (soluble)

Calculated MW:

483 aa, 53 kDa

Observed MW:

45-53 kDa

Purification Method:

Protein G purification

CloneNo.:

2D5E6

Recommended Dilutions:

IF 1:50-1:500

Excitation/Emission maxima wavelenghts:

493 nm / 522 nm

## Applications

Tested Applications:

IF/ICC

Species Specificity:

Human, pig, rabbit

Positive Controls:

IF : A549 cells, HepG2 cells

## Background Information

### Storage

Storage:

Store at -20°C. Avoid exposure to light. Stable for one year after shipment.

Storage Buffer:

PBS with 50% Glycerol, 0.05% Proclin300, 0.5% BSA, pH 7.3.

Aliquoting is unnecessary for -20°C storage

For technical support and original validation data for this product please contact:

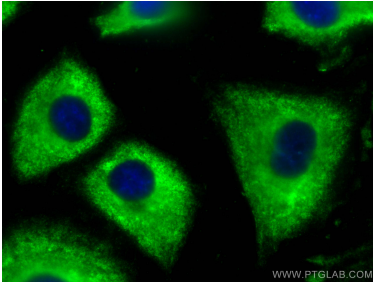
T: 4006900926

E: [Proteintech-CN@ptglab.com](mailto:Proteintech-CN@ptglab.com)

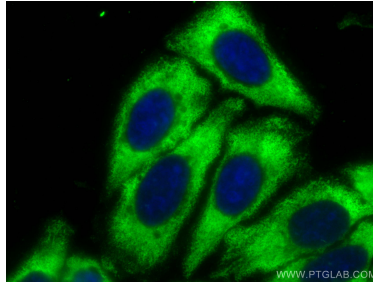
W: [ptgcn.com](http://ptgcn.com)

This product is exclusively available under Proteintech Group brand and is not available to purchase from any other manufacturer.

## Selected Validation Data



Immunofluorescent analysis of (-20°C Methanol) fixed A549 cells using CoraLite® Plus 488 SHMT1 antibody (CL488-67963, Clone: 2D5E6) at dilution of 1:200.



Immunofluorescent analysis of (-20°C Ethanol) fixed HepG2 cells using CoraLite® Plus 488 SHMT1 antibody (CL488-67963, Clone: 2D5E6) at dilution of 1:200.