

CoraLite® Plus 488-conjugated IPO5 Monoclonal antibody

Catalog Number: **CL488-67962**

Basic Information

Catalog Number:

CL488-67962

Size:

1000 µg/ml

Source:

Mouse

Isotype:

IgG1

Immunogen Catalog Number:

AG30955

GenBank Accession Number:

BC001497

GeneID (NCBI):

3843

UNIPROT ID:

O00410

Full Name:

importin 5

Observed MW:

124 kDa

Purification Method:

Protein G purification

CloneNo.:

1E2B9

**Excitation/Emission maxima
wavelengths:**

493 nm / 522 nm

Applications

Tested Applications:

FC (Intra)

Species Specificity:

Human, Mouse, Rat

Background Information

IPO5 is a member of the importin beta family. Structurally, the protein adopts the shape of a right-hand solenoid and is composed of 24 HEAT repeats. IPO5 facilitates cytoplasmic polyadenylation element-binding protein CPEB3 translocation by binding to the RRM1 motif of CPEB3 in neurons. NMDAR signaling increases RanBP1 expression and reduces the level of cytoplasmic GTP-bound Ran. These changes enhance CPEB3-IPO5 interaction, which consequently accelerates the nuclear import of CPEB3 and promotes its nuclear function.

Storage

Storage:

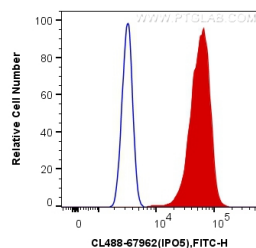
Store at -20°C. Avoid exposure to light. Stable for one year after shipment.

Storage Buffer:

PBS with 50% Glycerol, 0.05% Proclin300, 0.5% BSA, pH 7.3.

Aliquoting is unnecessary for -20°C storage

Selected Validation Data



1X10⁶ A431 cells were intracellularly stained with 0.4 ug CoraLite® Plus 488 Anti-Human IPO5 (CL488-67962, Clone:1E2B9) (red), or 0.4 ug Control Antibody. Cells were fixed and permeabilized with Transcription Factor Staining Buffer Kit (PF00011).