

CoraLite® Plus 488-conjugated CCT6B Monoclonal antibody

Catalog Number: **CL488-67961**

Basic Information

Catalog Number:

CL488-67961

Size:

1000 µg/ml

Source:

Mouse

Isotype:

IgG1

Immunogen Catalog Number:

AG31295

GenBank Accession Number:

BC027591

GeneID (NCBI):

10693

UNIPROT ID:

Q92526

Full Name:

chaperonin containing TCP1, subunit
6B (zeta 2)

Calculated MW:

530 aa, 58 kDa

Observed MW:

53-58 kDa

Purification Method:

Protein G purification

CloneNo.:

2F11A9

**Excitation/Emission maxima
wavelengths:**

493 nm / 522 nm

Applications

Tested Applications:

FC (Intra)

Species Specificity:

Human, Mouse, Rat

Background Information

CCT6B, also named as CCT-zeta-2, TCP-1-zeta-like, CCT-zeta-like, Testis-specific Tcp20 and Testis-specific protein TSA303, belongs to the TCP-1 chaperonin family. CCT6B is a molecular chaperone which assists the folding of proteins upon ATP hydrolysis. It is known to play a role, in vitro, in the folding of actin and tubulin. CCT6B has 3 isoforms with the molecular mass of 53-58 kDa.

Storage

Storage:

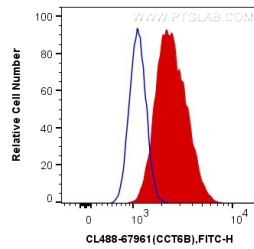
Store at -20°C. Avoid exposure to light. Stable for one year after shipment.

Storage Buffer:

PBS with 50% Glycerol, 0.05% Proclin300, 0.5% BSA, pH 7.3.

Aliquoting is unnecessary for -20°C storage

Selected Validation Data



1X10⁶ U2OS cells were intracellularly stained with 0.4 ug CoraLite® Plus 488 Anti-Human CCT6B (CL488-67961, Clone:2F11A9) (red), or 0.4 ug Control Antibody. Cells were fixed with 4% PFA and permeabilized with Flow Cytometry Perm Buffer (PF00011-C).