

CoraLite® Plus 488-conjugated PSMB5 Monoclonal antibody

Catalog Number: **CL488-67959**

Basic Information

Catalog Number:

CL488-67959

Size:

1000 µg/ml

Source:

Mouse

Isotype:

IgG2a

Immunogen Catalog Number:

AG5828

GenBank Accession Number:

BC057840

GeneID (NCBI):

5693

UNIPROT ID:

P28074

Full Name:

proteasome (prosome, macropain)
subunit, beta type, 5

Calculated MW:

263 aa, 28 kDa

Observed MW:

22 kDa

Purification Method:

Protein A purification

CloneNo.:

2E9H1

Recommended Dilutions:

IF/ICC 1:50-1:500

**Excitation/Emission maxima
wavelengths:**

493 nm / 522 nm

Applications

Tested Applications:

IF/ICC, FC (Intra)

Species Specificity:

human

Positive Controls:

IF/ICC : HeLa cells,

Background Information

PSMB5 (Proteasome subunit beta type-5) is also named as LMPX, MB1, X and belongs to the peptidase T1B family. The proteasome is a multicatalytic proteinase complex which is characterized by its ability to cleave peptides with Arg, Phe, Tyr, Leu, and Glu adjacent to the leaving group at neutral or slightly basic pH. RNAi-mediated silencing of it has 2 isoforms produced by alternative splicing.

Storage

Storage:

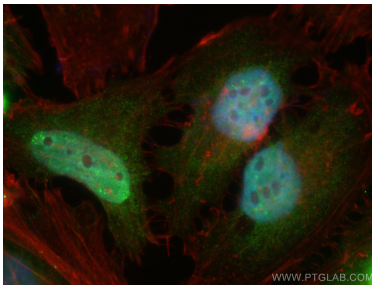
Store at -20°C. Avoid exposure to light. Stable for one year after shipment.

Storage Buffer:

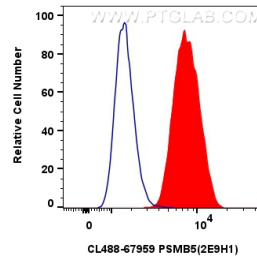
PBS with 50% Glycerol, 0.05% Proclin300, 0.5% BSA, pH 7.3.

Aliquoting is unnecessary for -20°C storage

Selected Validation Data



Immunofluorescent analysis of (4% PFA) fixed HeLa cells using CoraLite® Plus 488 PSMB5 antibody (CL488-67959, Clone: 2E9H1) at dilution of 1:200, CL594-Phalloidin (red).



1x10⁶ HeLa cells were intracellularly stained with 0.8 ug CoraLite® Plus 488-conjugated PSMB5 Monoclonal antibody (CL488-67959, Clone:2E9H1) (red), or 0.8 ug CoraLite® Plus 488 Mouse IgG2a Isotype Control (C1.18.4) (CL488-65208, Clone: C1.18.4) (blue). Cells were fixed and permeabilized with Transcription Factor Staining Buffer Kit (PF00011).