

CoraLite® Plus 488-conjugated SCAMP3 Monoclonal antibody

Catalog Number: **CL488-67932**

Basic Information

Catalog Number:

CL488-67932

Size:

1000 µg/ml

Source:

Mouse

Isotype:

IgG1

Immunogen Catalog Number:

AG26073

GenBank Accession Number:

BC000161

GeneID (NCBI):

10067

UNIPROT ID:

O14828

Full Name:

secretory carrier membrane protein 3

Calculated MW:

38 kDa

Observed MW:

33 kDa

Purification Method:

Protein G purification

CloneNo.:

1C1E6

Recommended Dilutions:

IF/ICC 1:50-1:500

Excitation/Emission maxima

wavelengths:

493 nm / 522 nm

Applications

Tested Applications:

IF/ICC

Species Specificity:

human, mouse, rat

Positive Controls:

IF/ICC : HeLa cells,

Background Information

Storage

Storage:

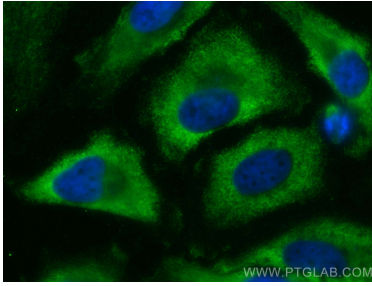
Store at -20°C. Avoid exposure to light.

Storage Buffer:

PBS with 50% Glycerol, 0.05% Proclin300, 0.5% BSA, pH 7.3.

Aliquoting is unnecessary for -20°C storage

Selected Validation Data



Immunofluorescent analysis of (-20°C Ethanol) fixed HeLa cells using CoraLite® Plus 488 SCAMP3 antibody (CL488-67932, Clone: 1C1E6) at dilution of 1:200.