

For Research Use Only

CoraLite® Plus 488-conjugated DDX3 Monoclonal antibody

Catalog Number: CL488-67915

Featured Product



Basic Information

Catalog Number:

CL488-67915

Size:

1000 µg/ml

Source:

Mouse

Isotype:

IgG2b

Immunogen Catalog Number:

AG29972

GenBank Accession Number:

BC011819

GeneID (NCBI):

1654

UNIPROT ID:

O00571

Full Name:

DEAD (Asp-Glu-Ala-Asp) box polypeptide 3, X-linked

Calculated MW:

73 kDa

Observed MW:

71-73 kDa

Purification Method:

Protein A purification

CloneNo.:

1D3A1

Excitation/Emission maxima wavelengths:

493 nm / 522 nm

Applications

Tested Applications:

FC (Intra)

Species Specificity:

human, rat

Background Information

DDX3X, also named DBX, DDX3, and HLP2, belongs to the DEAD-box helicase family and DDX3/DED1 subfamily. It is ATP-dependent RNA helicase. DDX3X acts as a cofactor for XPO1-mediated nuclear export of incompletely spliced HIV-1 Rev RNAs. It is also involved in HIV-1 replication. DDX3X interacts specifically with hepatitis C virus core protein resulting in a change in intracellular location. 73kd is the target band. 60-65kd is some other isoform. This antibody can bind both DDX3X and DDX3Y for the close sequences.

Storage

Storage:

Store at -20°C. Avoid exposure to light. Stable for one year after shipment.

Storage Buffer:

PBS with 50% Glycerol, 0.05% Proclin300, 0.5% BSA, pH 7.3.

Aliquoting is unnecessary for -20°C storage

For technical support and original validation data for this product please contact:

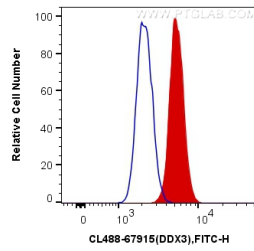
T: 4006900926

E: Proteintech-CN@ptglab.com

W: ptgcn.com

This product is exclusively available under Proteintech Group brand and is not available to purchase from any other manufacturer.

Selected Validation Data



1X10⁶ HepG2 cells were intracellularly stained with 0.4 ug Coralite® Plus 488 Anti-Human DDX3 (CL488-67915, Clone:1D3A1) (red), or 0.4 ug Mouse IgG2b Isotype Control (CL488-66360-3, Clone: K11B8C4B5) (blue). Cells were fixed and permeabilized with Transcription Factor Staining Buffer Kit (PF00011).