

CoraLite® Plus 488-conjugated YTHDC1 Monoclonal antibody

Catalog Number: **CL488-67911**

Basic Information

Catalog Number:

CL488-67911

Size:

1000 µg/ml

Source:

Mouse

Isotype:

IgG1

Immunogen Catalog Number:

AG6289

GenBank Accession Number:

BC053863

GeneID (NCBI):

91746

UNIPROT ID:

Q96MU7

Full Name:

YTH domain containing 1

Calculated MW:

85 kDa

Observed MW:

~100 kDa

Purification Method:

Protein G purification

CloneNo.:

1F5G11

**Excitation/Emission maxima
wavelengths:**

493 nm / 522 nm

Applications

Tested Applications:

FC (Intra)

Species Specificity:

Human

Background Information

YTHDC1, containing 1 YTH domain, is one of the m6A-binding proteins that can recognize and bind to the m6A methylation site and plays a specific role in gene expression. YTHDC1 is constitutively enriched in the nucleus. It regulates mRNA splicing by bridging the interactions between the trans- and cis-regulatory elements to bind targeted mRNAs. YTHDC1 mediates the export of m6A modified mRNA from the nucleus to the cytoplasm by interacting with SRSF3, which is an essential factor driving the tumorigenic process in various types of cancers including breast cancer, colon cancer, ovarian cancer, osteosarcoma, and glioblastoma (32368386).

Storage

Storage:

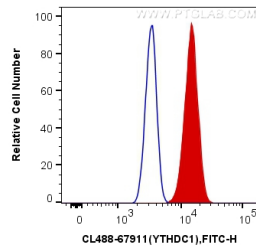
Store at -20°C. Avoid exposure to light. Stable for one year after shipment.

Storage Buffer:

PBS with 50% Glycerol, 0.05% Proclin300, 0.5% BSA, pH 7.3.

Aliquoting is unnecessary for -20°C storage

Selected Validation Data



1X10⁶ A431 cells were intracellularly stained with 0.4 ug CoraLite® Plus 488 Anti-Human YTHDC1 (CL488-67911, Clone:1F5G11) (red), or 0.4 ug Control Antibody. Cells were fixed and permeabilized with Transcription Factor Staining Buffer Kit (PF00011).