

For Research Use Only



CoraLite® Plus 488-conjugated Phospho-S6 Ribosomal protein (Ser235) Monoclonal antibody

Catalog Number: **CL488-67898**

Basic Information

Catalog Number: CL488-67898	GenBank Accession Number: BC000524	Purification Method: Protein A purification
Size: 1000 µg/ml	GeneID (NCBI): 6194	CloneNo.: 2A4B6
Source: Mouse	UNIPROT ID: P62753	Excitation/Emission maxima wavelengths: 493 nm / 522 nm
Isotype: IgG2b	Full Name: ribosomal protein S6	
	Calculated MW: 29 kDa	
	Observed MW: 32 kDa	

Applications

Tested Applications:
FC (Intra)

Species Specificity:
Human, mouse, rat

Background Information

Ribosomal protein S6 (RPS6) is one of the components of the 40S ribosomal subunit. RPS6 has been functionally regarded as the stimulator and/or inhibitor of certain types of mRNA translation, as well as the regulator of cellular metabolisms, cells size, survival and proliferation. RPS6 is phosphorylated at multiple sites, comprised between Ser235 and Ser247, by the p70 rpS6 kinase (S6K) 1, which is a major downstream effector of the mammalian target of rapamycin complex 1 (mTORC1). Phosphorylation of RPS6 at the dual site Ser235/236 occurs also independently of mTORC1, via the p90 ribosomal S6 kinases (RSK), which are activated by the extracellular signal-regulated kinases (ERK). Recent studies performed in pancreatic β-cells identified PKA as an additional RPS6 kinase, specifically involved in the phosphorylation of Ser235/236. (PMID: 26490682, PMID: 21814187, PMID: 31112404). 67898-1-Ig specifically recognizes the phosphorylation site of Ser235 or dual site Ser235/236.

Storage

Storage:
Store at -20°C. Avoid exposure to light. Stable for one year after shipment.
Storage Buffer:
PBS with 50% Glycerol, 0.05% Proclin300, 0.5% BSA, pH 7.3.
Aliquoting is unnecessary for -20°C storage

For technical support and original validation data for this product please contact:

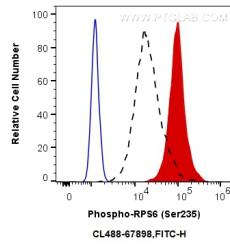
T: 4006900926

E: Proteintech-CN@ptglab.com

W: ptgcn.com

This product is exclusively available under Proteintech Group brand and is not available to purchase from any other manufacturer.

Selected Validation Data



1X10⁶ HeLa cells untreated (dashed lines) or treated with Calyculin A (red) were intracellularly stained with 0.25 ug CoraLite® Plus 488 Anti-Human Phospho-S6 Ribosomal protein (Ser235) (CL488-67898, Clone:2A4B6), or 0.25 ug Control Antibody (blue). Cells were fixed and permeabilized with True-Nuclear Transcription Factor Buffer Set.