

For Research Use Only

# CoraLite® Plus 488-conjugated KBTBD2 Monoclonal antibody



Catalog Number: CL488-67895

## Basic Information

<b>Catalog Number:</b> CL488-67895	<b>GenBank Accession Number:</b> BC047107	<b>Purification Method:</b> Protein G purification
<b>Size:</b> 1000 µg/ml	<b>GeneID (NCBI):</b> 25948	<b>CloneNo.:</b> 2A9F3
<b>Source:</b> Mouse	<b>UNIPROT ID:</b> Q8IY47	<b>Recommended Dilutions:</b> IF 1:50-1:500
<b>Isotype:</b> IgG1	<b>Full Name:</b> kelch repeat and BTB (POZ) domain containing 2	<b>Excitation/Emission maxima wavelengths:</b> 493 nm / 522 nm
<b>Immunogen Catalog Number:</b> AG4933	<b>Calculated MW:</b> 622 aa, 71 kDa	

## Applications

<b>Tested Applications:</b> IF/ICC	<b>Positive Controls:</b> IF : HeLa cells,
<b>Species Specificity:</b> Human, mouse, rat	

## Background Information

Kelch repeat and BTB domain containing 2 (KBTBD2), also known as BTB and kelch domain-containing protein 1, encodes a BTB-Kelch family subunit that p85  $\alpha$ -specific recognition for the Cullin3-based E3 ubiquitin ligase complex, which regulates p85  $\alpha$  protein ubiquitination and subsequently regulates phosphoinositide-3 kinases (PI3K) signaling (PMID:27708159). However, the expression profile and functional significance of Kbtbd2 is still largely unknown. The Human Protein Atlas which is an online source shows high Kbtbd2 expression in the spleen and thymus, suggesting that Kbtbd2 might involved in immunization (PMID:29331106). In addition, Kbtbd2 is related to Src-induced phosphorylation of protein, spermatogonial stem cell activity (PMID:15623525, 29331106).

## Storage

**Storage:**  
Store at -20°C. Avoid exposure to light.  
**Storage Buffer:**  
PBS with 50% Glycerol, 0.05% Proclin300, 0.5% BSA, pH 7.3.  
Aliquoting is unnecessary for -20°C storage

For technical support and original validation data for this product please contact:

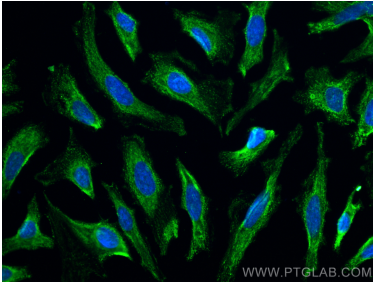
T: 4006900926

E: Proteintech-CN@ptglab.com

W: ptgcn.com

This product is exclusively available under Proteintech Group brand and is not available to purchase from any other manufacturer.

## Selected Validation Data



Immunofluorescent analysis of (-20°C Methanol) fixed HeLa cells using CoraLite® Plus 488 KBTBD2 antibody (CL488-67895, Clone: 2A9F3) at dilution of 1:200.