

CoraLite® Plus 488-conjugated ARL8B Monoclonal antibody

Catalog Number: **CL488-67891**

Basic Information

Catalog Number:

CL488-67891

Size:

1000 µg/ml

Source:

Mouse

Isotype:

IgG2a

Immunogen Catalog Number:

AG3711

GenBank Accession Number:

BC013131

GeneID (NCBI):

55207

UNIPROT ID:

Q9NVJ2

Full Name:

ADP-ribosylation factor-like 8B

Calculated MW:

186 aa, 22 kDa

Observed MW:

22 kDa

Purification Method:

Protein A purification

CloneNo.:

2G10E2

Recommended Dilutions:

WB 1:500-1:2000

**Excitation/Emission maxima
wavelengths:**

493 nm / 522 nm

Applications

Tested Applications:

WB, FC (Intra)

Species Specificity:

human, mouse, rat, pig

Positive Controls:

WB : K-562 cells,

Background Information

ARL8B (ADP-ribosylation factor-like 8B) , also known as ARL10C or GIE1, is a small GTPase of the Arl-family, that is associated with the lysosome. ARL8A interacts with Tubulin, and plays a role in lysosome motility, as well as in chromosomal segregation. ARL8B plays a role in the spatial distribution and positioning of lysosomes. ARL8B is regarded as a regulator of endosome to lysosome trafficking pathways of special significance for host defense.

Storage

Storage:

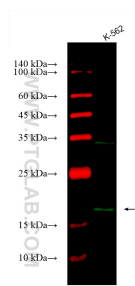
Store at -20°C. Avoid exposure to light. Stable for one year after shipment.

Storage Buffer:

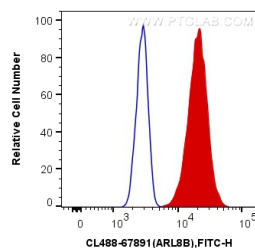
PBS with 50% Glycerol, 0.05% Proclin300, 0.5% BSA, pH 7.3.

Aliquoting is unnecessary for -20°C storage

Selected Validation Data



Various lysates were subjected to SDS PAGE followed by western blot with CL488-67891 (ARL8B antibody) at dilution of 1:1000 incubated at room temperature for 1.5 hours.



1X10⁶ HeLa cells were intracellularly stained with 0.4 ug CoraLite® Plus 488 Anti-Human ARL8B (CL488-67891, Clone:2G10E2) (red), or 0.4 ug Mouse IgG2a Isotype Control (CL488-66360-2, Clone: K11A1B2A2) (blue). Cells were fixed with 4% PFA and permeabilized with Flow Cytometry Perm Buffer (PF00011-C).