

For Research Use Only

CoraLite® Plus 488-conjugated HSPB3 Monoclonal antibody



Catalog Number:CL488-67890

Basic Information

Catalog Number: CL488-67890	GenBank Accession Number: BC126272	Purification Method: Protein A purification
Size: 1000 µg/ml	GeneID (NCBI): 8988	CloneNo.: 2A10B5
Source: Mouse	UNIPROT ID: Q12988	Excitation/Emission maxima wavelengths: 493 nm / 522 nm
Isotype: IgG2b	Full Name: heat shock 27kDa protein 3	
Immunogen Catalog Number: AG26940	Calculated MW: 150 aa, 17 kDa	
	Observed MW: 20 kDa	

Applications

Tested Applications:
FC (Intra)

Species Specificity:
Human, rabbit, mouse, rat

Background Information

Heat shock protein family B (small) member 3 (HSPB3) is the third member of the sHSP family in human and is mainly expressed in skeletal and smooth muscles, and can associate with HSPB2, which is another sHSP prominently expressed in cardiac and skeletal muscles. HSPB3 is involved in several cellular functions such as cell signaling, differentiation, and apoptosis, and mutations of HSPB3 are associated with neuromuscular diseases, such as axonal Charcot - Marie - Tooth disease (PMID: 31709619) (PMID: 32093037). The molecular weight of HSPB3 is about 17 kDa.

Storage

Storage:
Store at -20°C. Avoid exposure to light. Stable for one year after shipment.

Storage Buffer:
PBS with 50% Glycerol, 0.05% Proclin300, 0.5% BSA, pH 7.3.

Aliquoting is unnecessary for -20°C storage

For technical support and original validation data for this product please contact:

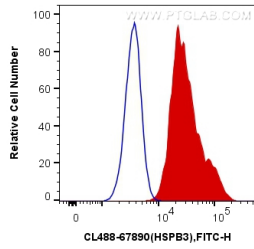
T: 4006900926

E: Proteintech-CN@ptglab.com

W: ptgcn.com

This product is exclusively available under Proteintech Group brand and is not available to purchase from any other manufacturer.

Selected Validation Data



1×10^6 HeLa cells were intracellularly stained with 0.4 μ g CoraLite® Plus 488 Anti-Human HSPB3 (CL488-67890, Clone:2A10B5) (red), or 0.4 μ g Mouse IgG2b Isotype Control (CL488-66360-3, Clone: K11B8C4B5) (blue). Cells were fixed with 4% PFA and permeabilized with Flow Cytometry Perm Buffer (PF00011-C).