

For Research Use Only

# CoraLite® Plus 488-conjugated CBFB Monoclonal antibody



Catalog Number: CL488-67885

## Basic Information

<b>Catalog Number:</b> CL488-67885	<b>GenBank Accession Number:</b> BC018509	<b>Purification Method:</b> Protein G purification
<b>Size:</b> 1000 µg/ml	<b>GeneID (NCBI):</b> 865	<b>CloneNo.:</b> 1D7F2
<b>Source:</b> Mouse	<b>UNIPROT ID:</b> Q13951	<b>Excitation/Emission maxima wavelengths:</b> 493 nm / 522 nm
<b>Isotype:</b> IgG1	<b>Full Name:</b> core-binding factor, beta subunit	
<b>Immunogen Catalog Number:</b> AG31183	<b>Calculated MW:</b> 182 aa, 22 kDa	

## Applications

**Tested Applications:**  
FC (Intra)

**Species Specificity:**  
Human

## Background Information

CBFB (core binding factor subunit  $\beta$ ), forms the heterodimeric complex core-binding factor (CBF). As a critical transcription factor, CBFB is frequently mutated in breast cancer and considered to be of significance in the pathogenesis of cancer. (PMID: 29932212) The heterodimers bind to the core site of a number of enhancers and promoters, including murine leukemia virus, polyomavirus enhancer, T-cell receptor enhancers, LCK, IL3 and GM-CSF promoters.) It has calculated molecular weight around 22kDa.

## Storage

**Storage:**  
Store at -20°C. Avoid exposure to light. Stable for one year after shipment.

**Storage Buffer:**  
PBS with 50% Glycerol, 0.05% Proclin300, 0.5% BSA, pH 7.3.

Aliquoting is unnecessary for -20°C storage

For technical support and original validation data for this product please contact:

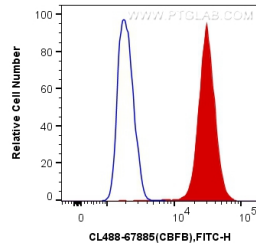
T: 4006900926

E: Proteintech-CN@ptglab.com

W: ptgcn.com

This product is exclusively available under Proteintech Group brand and is not available to purchase from any other manufacturer.

## Selected Validation Data



1X10<sup>6</sup> K-562 cells were intracellularly stained with 0.4 ug CoraLite® Plus 488 Anti-Human CBFB (CL488-67885, Clone:1D7F2) (red), or 0.4 ug Control Antibody. Cells were fixed with 4% PFA and permeabilized with Flow Cytometry Perm Buffer (PF00011-C).